

Proposed mechanisms for funding collaborative genomic projects that capitalize of existing studies



Lisa Brooks, NHGRI

Robert Karp, NIDDK

Pamela McInnes, NIDCR

Mark Rohrbaugh, OD, NIH

Winnie Rossi, NIA

Gerald Sharp, NIAID

William Sharrock, NIAMS

June 6, 2006

Issues to consider

- Intellectual Property
- Data Sharing
- Consent Issues
- Cost

The NIA Longevity Consortium

- EXPLORATORY PROJECTS FOR LONGITUDINAL GENETIC EPIDEMIOLOGIC STUDIES ON AGING

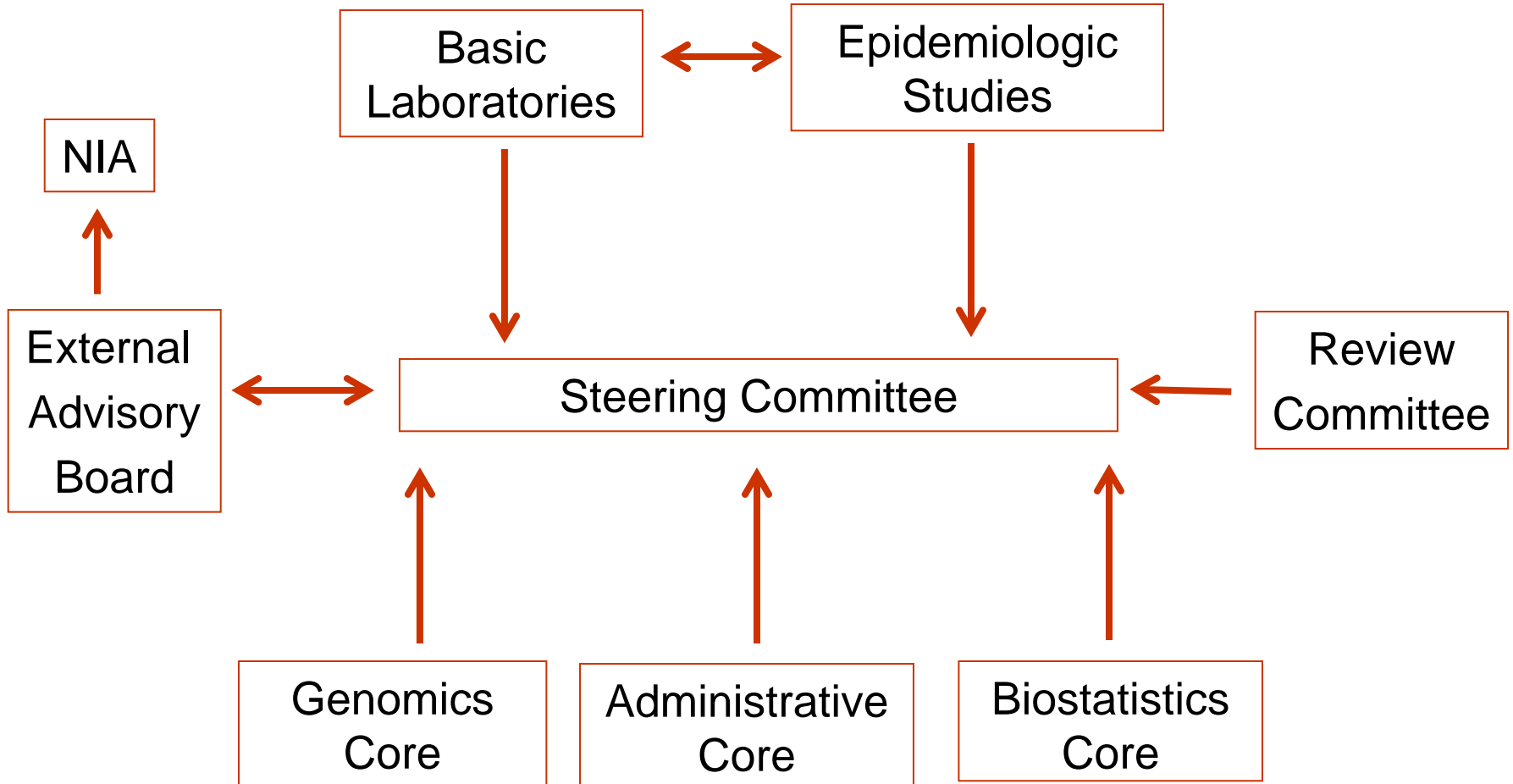
<http://grants2.nih.gov/grants/guide/rfa-files/RFA-AG-99-007.html>

Exploratory RO1 (1999) → Program Project (2003) → Cooperative Agreement (2004)

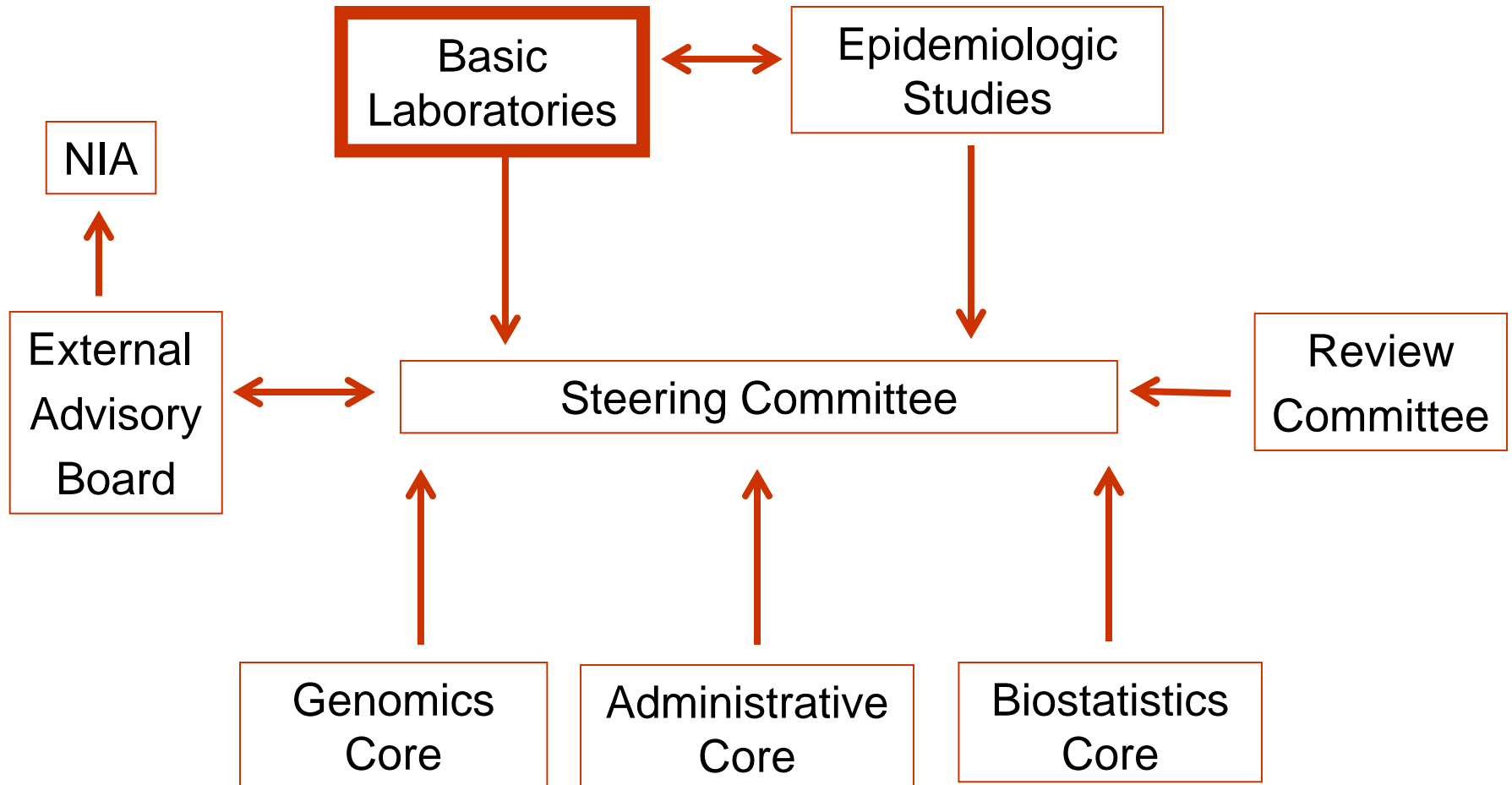
GOAL: Develop a Basic and Epidemiologic infrastructure to identify genotypes that predispose to human longevity or protect against multiple age-related diseases and disabilities and learn how they do it.

PI: Steven Cummings, University of California, San Francisco

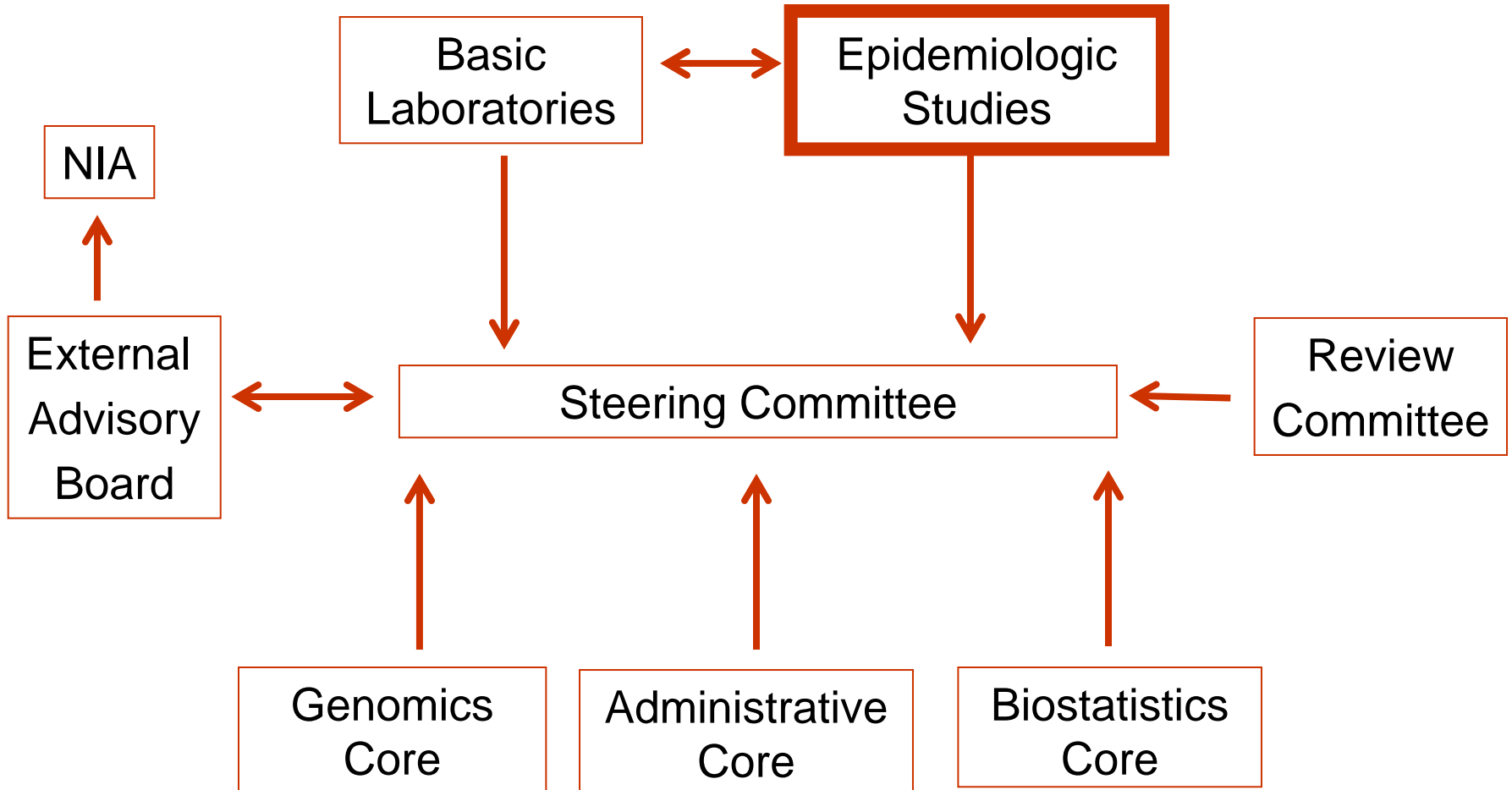
Consortium Structure



Consortium Structure



Consortium Structure



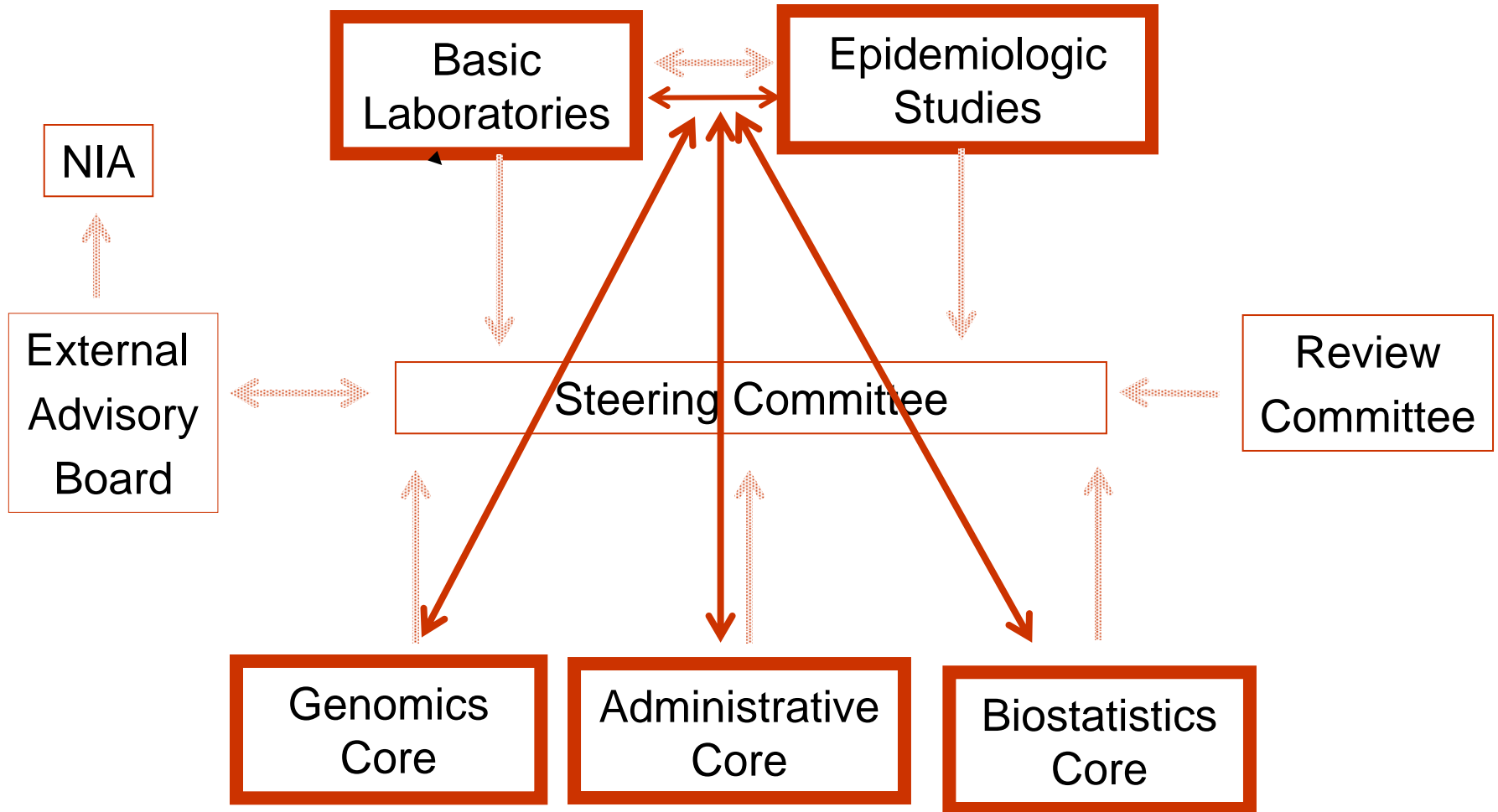
Epidemiologic Cohorts

15 of the largest human aging-related studies including:

- Cardiovascular Health Study
- Women's Health Initiative
- Health ABC
- The Study of Osteoporotic Fractures
- The Rotterdam Study
- Honolulu Heart Study
- The New England Centenarian Study

Total number of study subjects: 150,000 (all with blood collected)

Consortium Structure



Speeding Translation

Rapid review and distribution of reserve funds for replication and confirmation studies within the consortium

- Test finding from a laboratory study in an epidemiologic study
- Replicate a finding from one human cohort in other human cohorts
- Confirm a basic or epidemiologic findings from outside the consortium
- Pilot data (e.g., genotyping) for RO1 applications generated from the Consortium