

PHARMACOGENOMICS: 2014

Dr Howard L. McLeod
Medical Director, DeBartolo Family
Personalized Medicine Institute

Senior Member, Division of Population Sciences




Current Topics in Genome Analysis 2014

Howard McLeod


*Gentris Corporation
Member, Board of Director*





**“A surgeon who uses the wrong side of the scalpel cuts her own fingers and not the patient;
if the same applied to drugs they would have been investigated very carefully a long time ago”**

*Rudolph Bucheim
Beitrage zur Arzneimittellehre, 1849*

DeBartolo Family
PERSONALIZED MEDICINE INSTITUTE **MOFFITT**
CANCER CENTER 

The clinical problem

- Multiple active regimens for the treatment of most diseases
- Variation in response to therapy
- Unpredictable toxicity

\$\$\$\$\$\$\$\$\$\$\$\$

With choice comes decision

STATE OF THE ART REVIEW

Diagnosis: molecular taxonomy

Expanded definition of self

Host germline genome, Tumor genome, Infectious agents, Microbiome

Earlier diagnosis

Noninvasive prenatal testing, Expanded newborn screening, Clinical Mendelian sequencing

Earlier diagnosis in human disease

Disease burden, BRC1/2 testing for breast cancer risk, Corus CAD test for heart disease, Oncotype DX test for ER+ breast cancer diagnosis

Time: Health, Preclinical, Clinical

Treatment: tailored choices

Targeting specific disease markers

HER 2 protein, Herceptin, Cancer cell

Improved likelihood of response

HCV patients: PegIFN treatment responders

IL28B genotype CT/TT: 40%
 IL28B genotype CC: 80%

Enhanced drug safety

Abacavir hypersensitive vs Abacavir tolerant

HLA-B*57:01, HLA-D*03, HLA-B*57:01 + HLA-D*03, HLA-D*03

Dosing optimization

iWarfarin app for iPhone

Genomic Medicine: A Decade of Successes, Challenges, and Opportunities

Jeanette J. McCarthy,^{1,2} Howard L. McLeod,³ Geoffrey S. Ginsburg^{1*}

DeBartolo Family PERSONALIZED MEDICINE INSTITUTE | MOFFITT CANCER CENTER

Pharmacogenomics: what is your intent?

Human genetic discovery

Drug Safety

Explain variation in phenotype

Clinical trial inclusion/exclusion

Clinical practice

Family Physician Medical Group, Inc.
 822 Geneva Avenue, Suite 200, Fremont, CA 94539
 TEL: (510) 533-0800 FAX: (510) 533-0800

PATIENT NAME: THOMAS BUCK DOB: 12/02/1976
 ADDRESS: DATE: 03/22/2014

po BID

John Doe MD, MD

Ⓡ LABEL Ⓡ DO NOT SUBSTITUTE

Cancer Pharmacogenomics and Tumor and Germline Genomes.

A Tumor genome

Gefitinib (red pill) is shown. A human torso with lung cancer is depicted. The diagram shows the EGF receptor and EGF ligand. Gefitinib (kinase inhibitor) blocks the EGF receptor. EGFR activating mutations in the tumor genome lead to increased tumor sensitivity to gefitinib.

B Germline genome

Innocen (blue pill) is shown. A human torso with a healthy liver and colon cancer is depicted. The diagram shows the conversion of Innocen to SN-38 (active drug) and SN-38 glucuronide (inactive metabolite). Germline genome polymorphisms (UGT1A1*28 (TA)_nTAA) lead to low expression of UGT1A1 and low level of glucuronidation, resulting in higher levels of active SN-38. Conversely, high expression of UGT1A1 and high level of glucuronidation result in lower levels of active SN-38.

Wang L et al. *N Engl J Med* 2011;364:1144-1153.

The NEW ENGLAND JOURNAL of MEDICINE


DeBartolo Family PERSONALIZED MEDICINE INSTITUTE

MOFFITT CANCER CENTER

Applications of pharmacogenetics

- Explanation for untoward event (DPYD, CYP2D6)
- Required for insurance coverage (KRAS, EGFR, ABL)
- Identify low utility (KRAS)
- Dose selection (CYP2C9, CYP2C19)
- Therapy selection (CYP2C19)
- Preemptive prediction (HLA-B*5701)

INSTITUTE OF PHARMACOGENOMICS AND INDIVIDUALIZED THERAPY | UNC-CHAPEL HILL




Pharmacogenomic examples-2014

- *bcr/abl* or 9:22 translocation—imatinib mesylate*
- HER2-*neu*—trastuzumab**
- C-kit mutations—imatinib mesylate**
- Epidermal growth factor receptor mutations—gefitinib
- BRAF-vemurafenib
- ALK-Crizotinib
- TPMT-mercaptopurine and azathioprine*
- UGT1A1-irinotecan**
- CYP2C9/VKORC1-warfarin*
- HLA-B*5701-abacavir .
- HLA-B*1502-carbamazepine .
- IL28B-interferon
- CFTR-ivacaftor
- CYP2C19-clopidogrel, voriconazole
- CYP2D6-5-HT3 receptor antagonists, antidepressants, ADHD drugs, and codeine derivatives*

DeBartolo Family
PERSONALIZED MEDICINE INSTITUTE

MOFFITT
CANCER CENTER

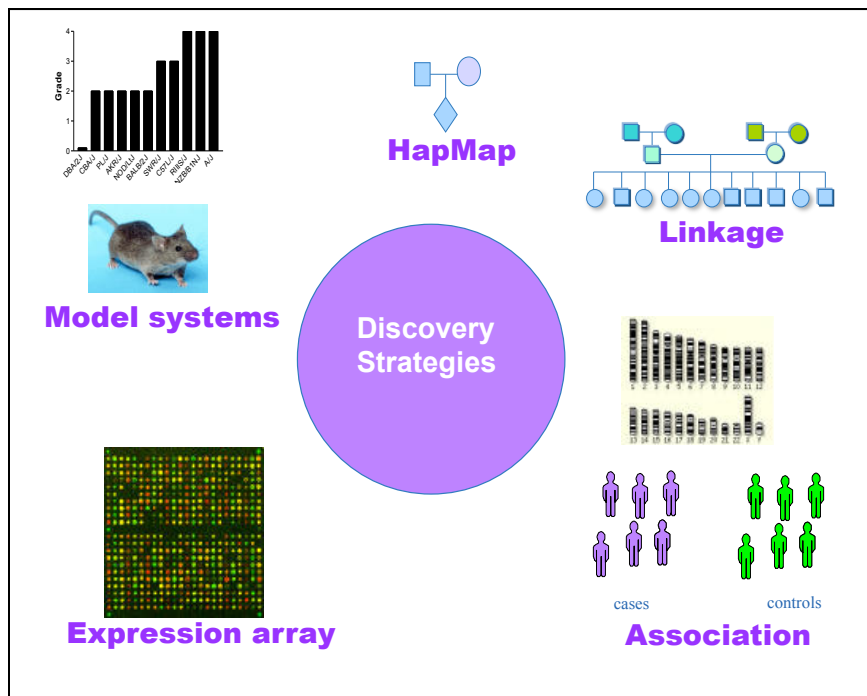
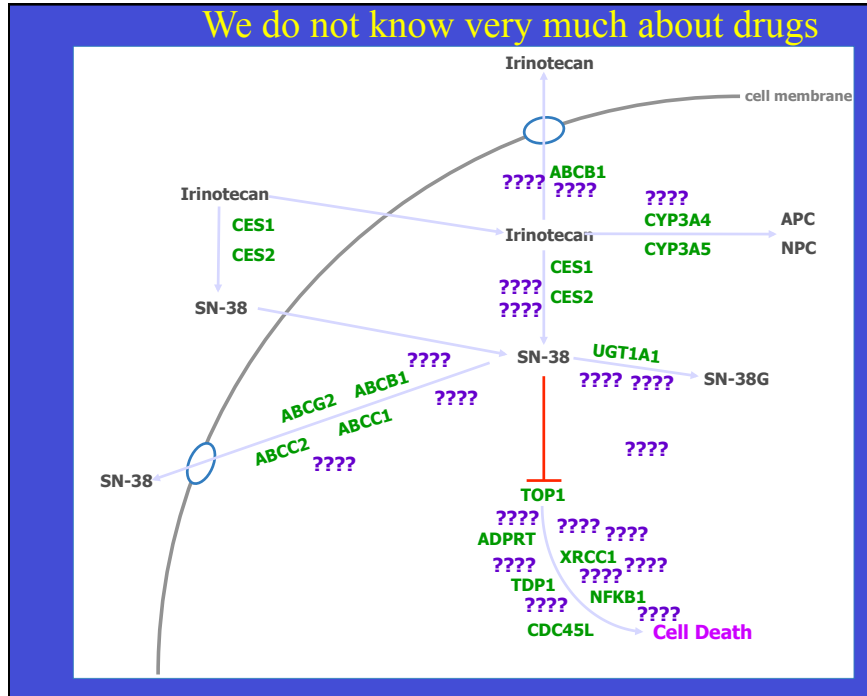



What needs to be done to determine hope vs hype?

- Find the 'right' biomarkers
- Validate in robust datasets
- Apply them!

DeBartolo Family
PERSONALIZED MEDICINE INSTITUTE

MOFFITT
CANCER CENTER





 **We are only beginning to try!**

As of 5/6/14

Drug-related phenotypes represented

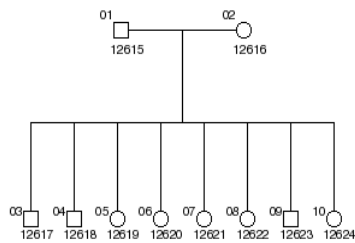
- 73/2228 GWA studies (3.3%)
- 18/73 had ≥ 500 'cases'
- 22/73 (30%) found no significant 'hits'
- 37/73 PGx studies had a replication cohort
- 11 contributed to changes in FDA 'package insert'

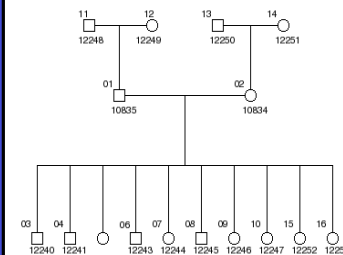
Centre d' Etude du Polymorphisme Human (CEPH) Cell lines

- Large, multigeneration pedigrees widely studied
- Immortalized lymphoblastoid cell lines

CEPH/French Pedigree 35



CEPH/Utah Pedigree 1416

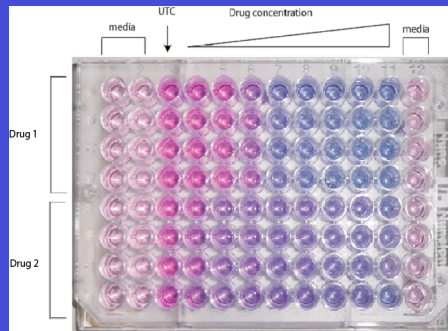


Methodology

Cells counted, plated at 1×10^4 / well

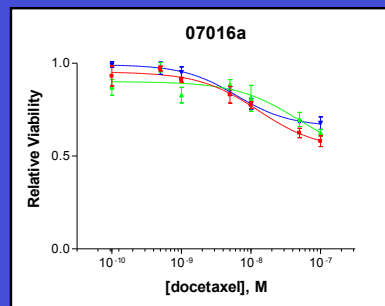
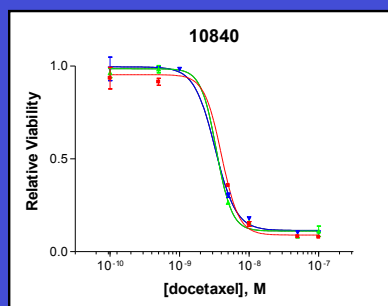
Cells incubated with increasing concentrations of drug

Alamar blue vital dye indicator added



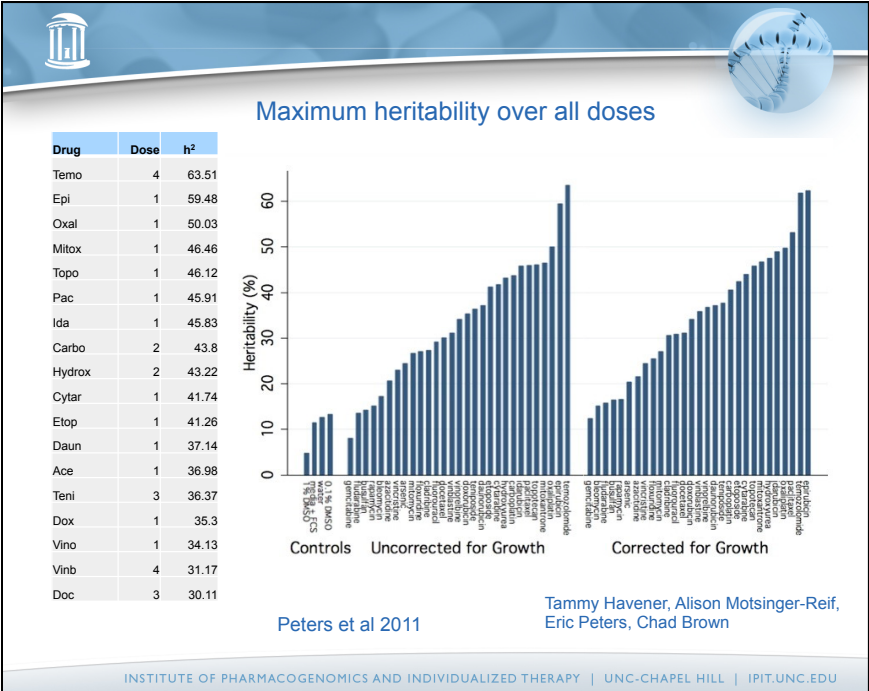
Viability relative to untreated control calculated by spectrophotometry

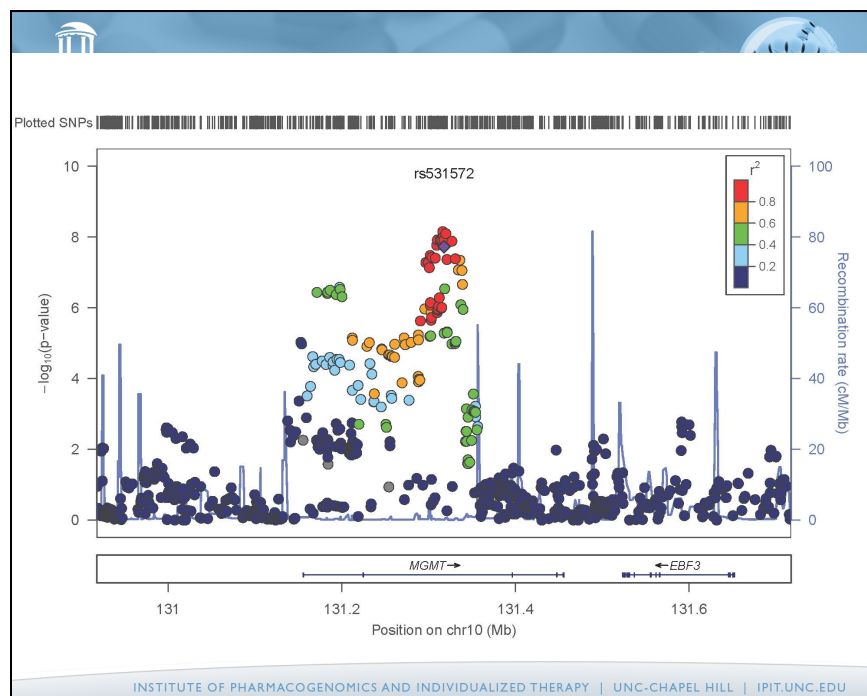
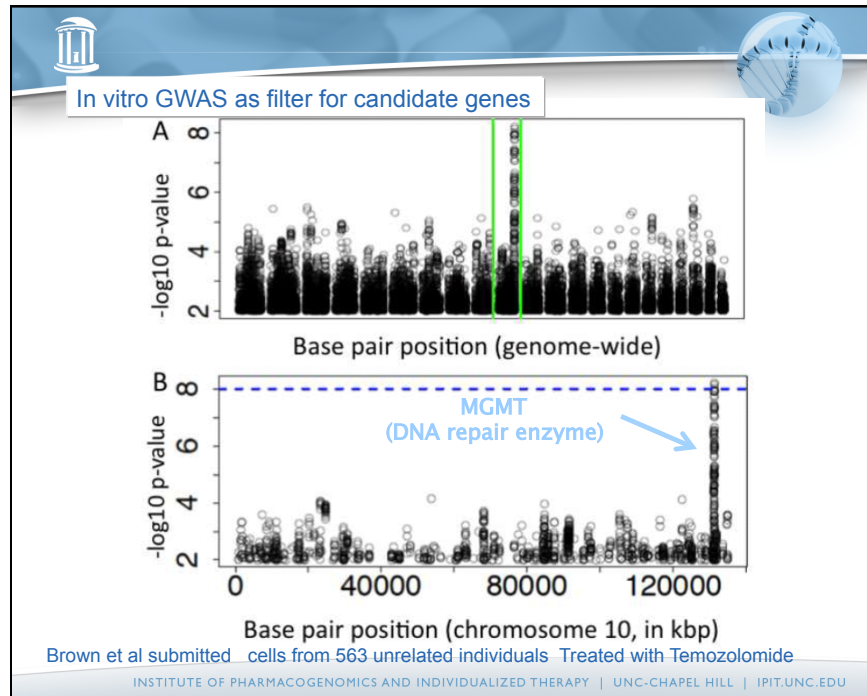
Significant Variation in Cellular Sensitivity to Docetaxel

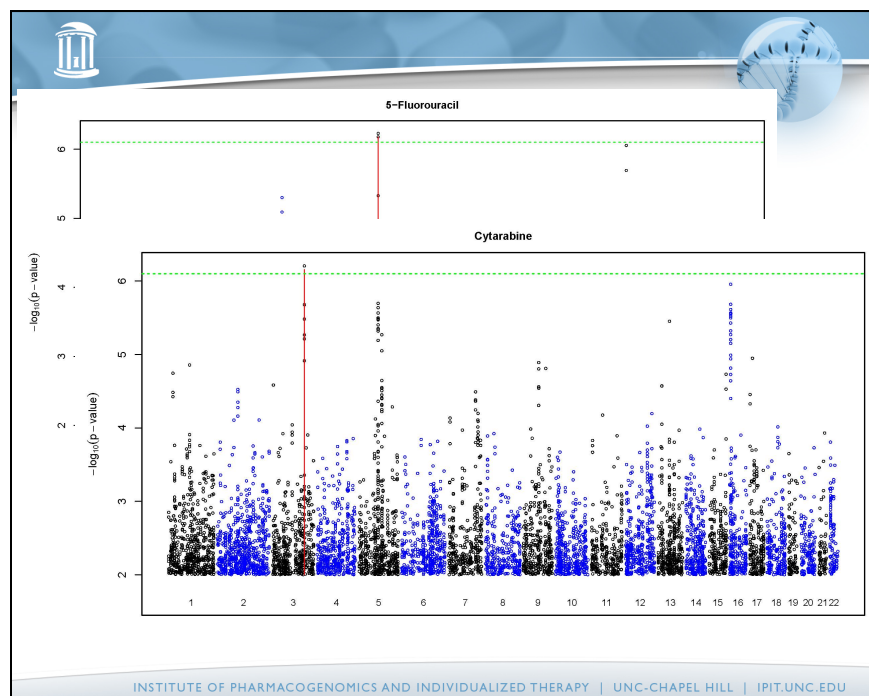
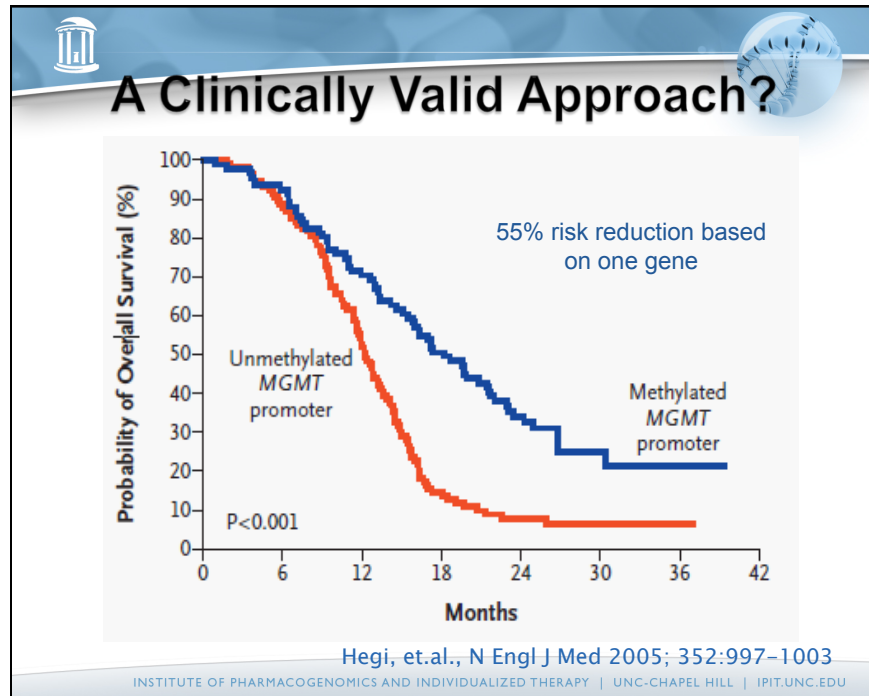



'CE-PH/F-DA' project

- 126 CEPH cell lines from 14 nuclear families
- All FDA approved cytotoxic drugs + new kinase inhibitors/MTOR/demethylation
- No antiestrogen or vitamin A analogues
- Evaluate degree of heritability, presence of QTL(s), and evidence for correlations between drug sensitivity patterns.





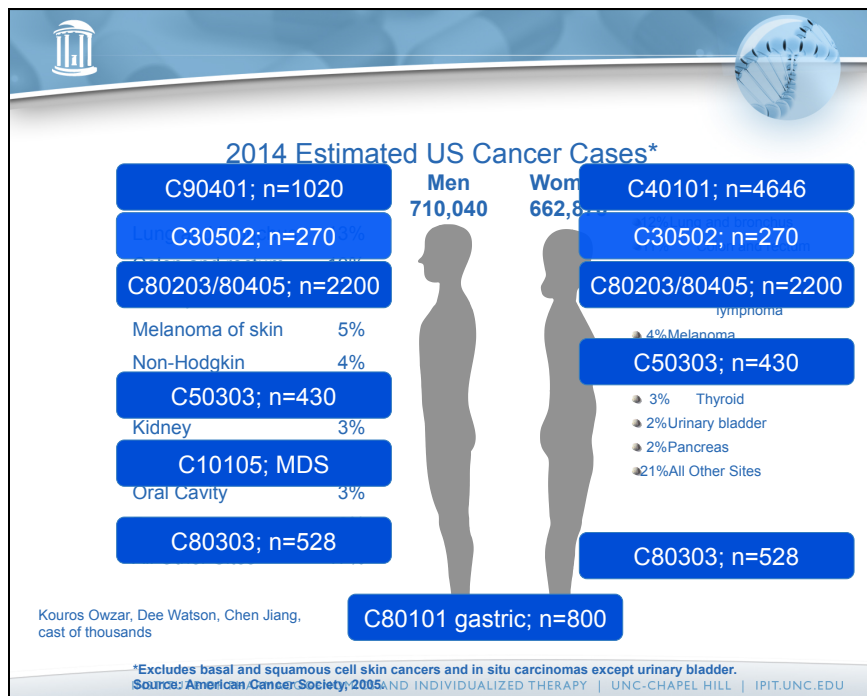


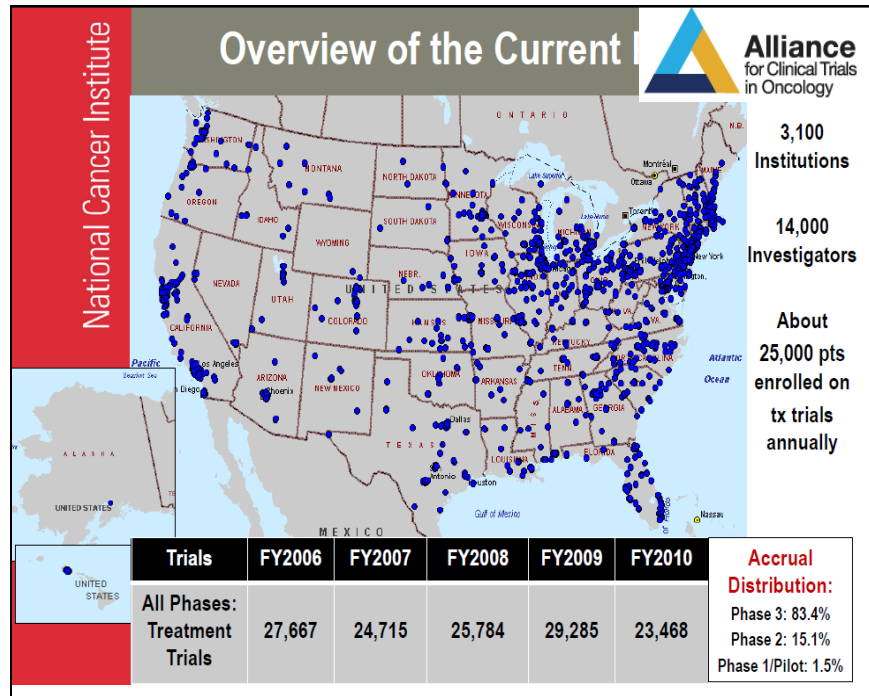


What needs to be done to determine hope vs hype?

- Find the 'right' biomarkers
- Validate in robust datasets
- Apply them!

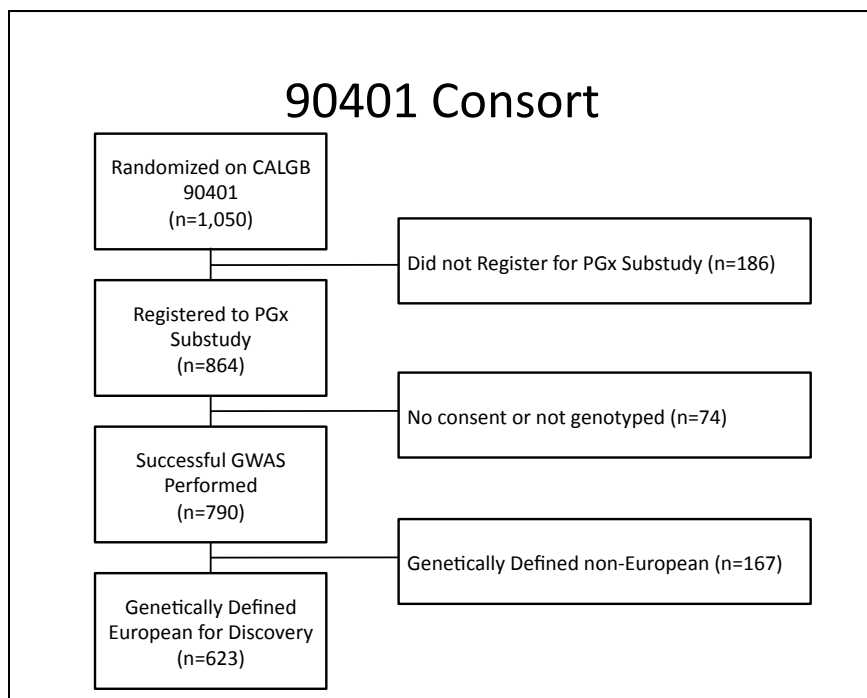
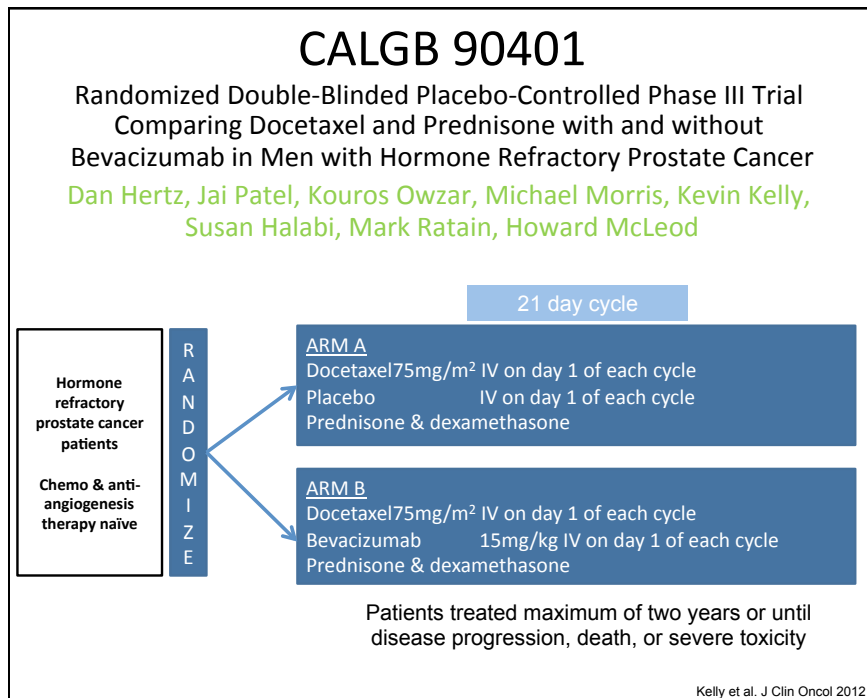
DeBartolo Family
 PERSONALIZED MEDICINE INSTITUTE | MOFFITT
 CANCER CENTER





CTC AE V3.0 Toxicity Grading

	Grade 2	Grade 3	Grade 4
Neutropenia	<1500-1000/mm ³	1000-500/mm ³	<500/mm ³
Neuropathy	Asymptomatic; loss of deep tendon reflexes or paresthesia	Interfering with function but no activities of daily living	Interfering with activities of daily living
Hypertension	Asymptomatic, transient increase by >20 mmHg (diastolic) or to >150/100 if previously WNL	Symptomatic or persistent increase by >20 mmHg (diastolic) or to >150/100 if previously WNL	Requiring more than one drug or more intensive therapy than previously
Proteinuria	2+ to 3+ or >1.0-3.5 g/24 hrs	4+ or >3.5 g/24 hrs	Nephrotic syndrome
Thrombosis	intervention not indicated	Intervention indicated	Embolus event or life-threatening thrombus
Hemorrhage	Gross bleeding or medical intervention necessary	Transfusion or operative intervention indicated	Life-threatening consequences; major urgent intervention



Toxicity Endpoints and Competing Risks in 90401 cohort (n=810)

	Docetaxel Toxicities			Bevacizumab Toxicities																
	Neutropenia		Neuro-pathy	Hypertension		Proteinuria		Thrombosis		Hemorrhage										
	3+	4+	3+	2+	3+	2+	3+	2+	3+	2+										
Toxicity Endpoint	285	36%	161	20%	57	7%	86	11%	34	4%	44	6%	10	1%	53	7%	49	6%	79	10%
Completed tx w/o toxicity		2%		3%		4%		3%		3%		3%		4%		3%		3%		3%
Death/Progress.		31%		37%		40%		36%		38%		38%		39%		38%		39%		39%
Tx Terminating Adverse Event		19%		26%		32%		34%		37%		36%		38%		34%		35%		31%
Withdrew/other		12%		14%		17%		16%		18%		17%		18%		18%		18%		18%

- Prioritize GWAS by:
 - Clinical relevance of toxicity
 - Toxicity event rate
 - Note: half of patients received bevacizumab
 - Likelihood of genetic causal factor
 - Absence of strong confounding

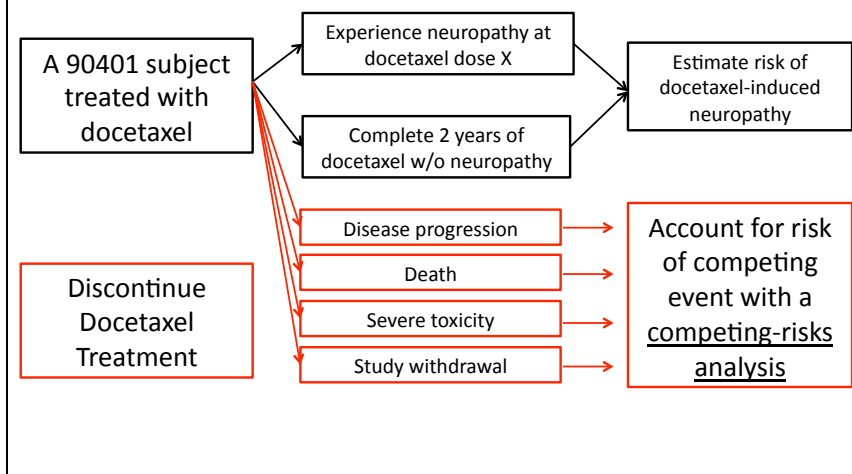
Phenotype Cleaning for Competing Risks Analysis

- Distinct dataset for each toxicity endpoint GWAS
 - Categorize patients for toxicity of interest or treatment completion
 - Patients who discontinued treatment without experiencing toxicity endpoint categorized by reason for discontinuation (competing risk)
 - Death or progression
 - Treatment terminating adverse event (TTAE)
 - Withdrawal/other
- Each toxicity or competing risk assigned dose-at-event

CALGB 90401 Pharmacogenomic Substudy

- Aim
 - Discover loci that modulate toxicity risk in prostate cancer patients treated with docetaxel ± bevacizumab
- Separate GWAS for each toxicity of interest
 - Docetaxel: neuropathy, neutropenia
 - Bevacizumab: hypertension, proteinuria, hemorrhage, thrombosis
- Use dose-to-event Cox proportional hazards model for subdistributions
 - Cumulative docetaxel dose (mg/m²) at grade 3+ sensory neuropathy occurrence
 - Adjust for relevant clinical covariates
 - Age (continuous)
 - Diabetes (yes vs. no)
 - BMI (>30 kg/m² vs. other)
 - Treatment arm (bevacizumab vs. placebo)

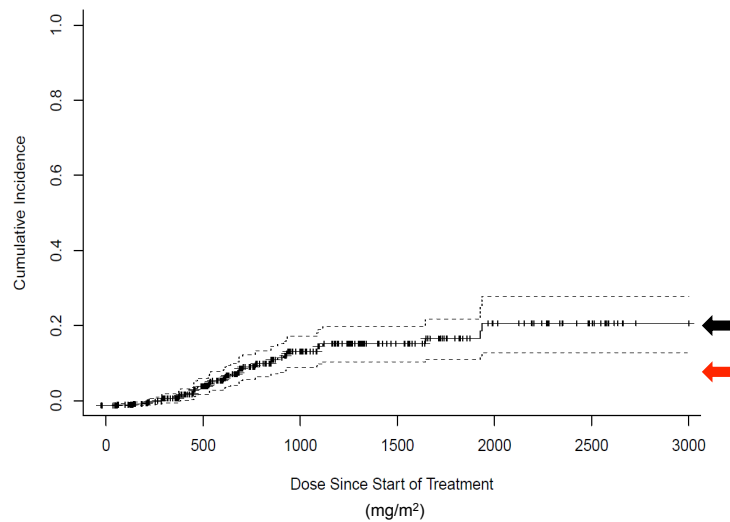
Competing Risks Analysis

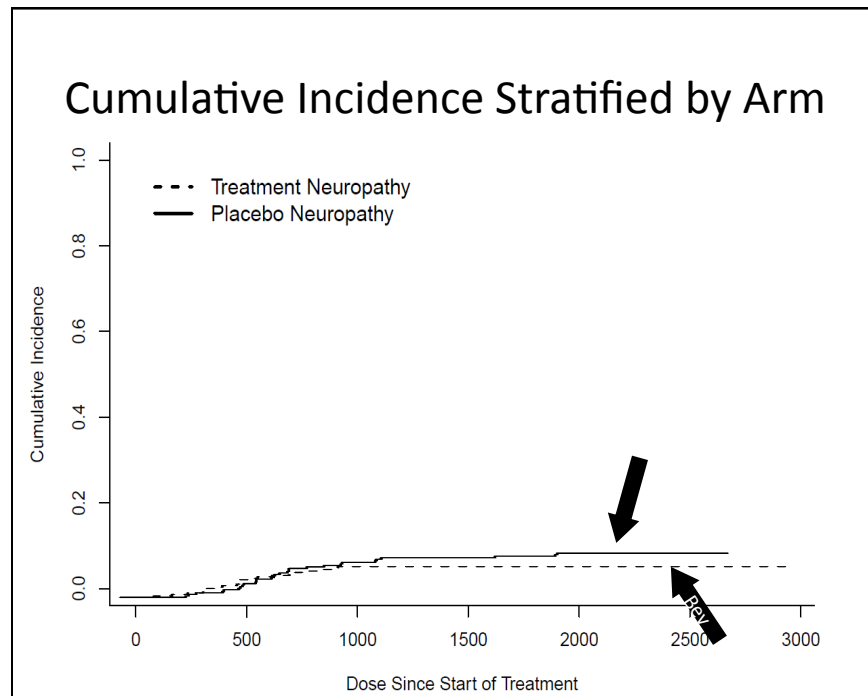


Phenotype Cleaning for Competing Risks Analysis

- Distinct dataset for each toxicity GWAS
 - Categorize every patient by toxicity of interest or competing risk
- Neuropathy GWAS
 - Any patient who experienced neuropathy assigned a 1
 - Any patient who finished treatment w/o neuropathy assigned a 0
- Categorize remaining patients by reason for treatment discontinuation (discontinued treatment before 2 years without neuropathy)
 - Death or progression: 2
 - Treatment terminating adverse event (TTAE): 3
 - Withdrawal/other: 4
 - 2-4 are 'competing risks'
- Each toxicity or competing risk is assigned a dose (or time) at event

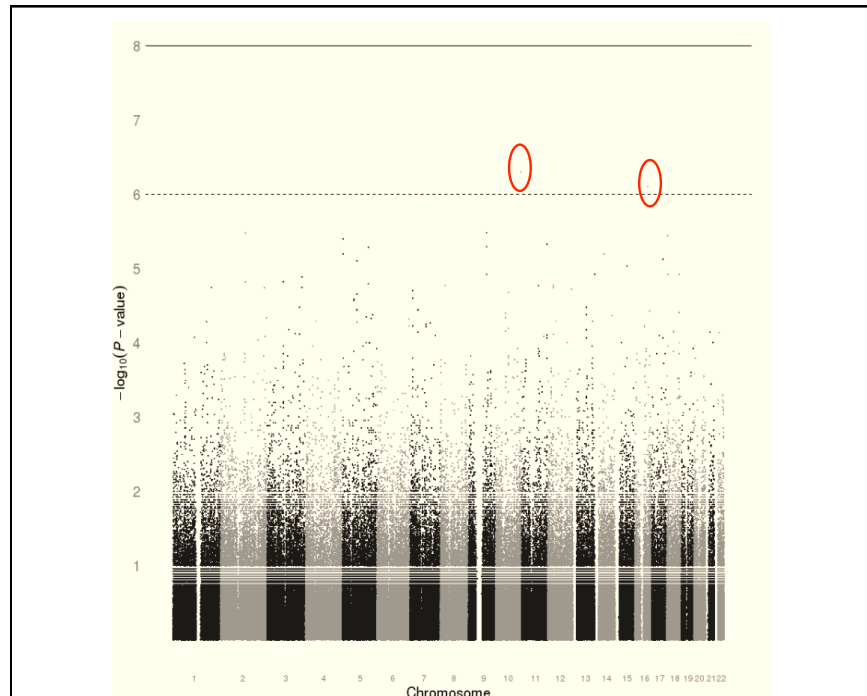
Cumulative Incidence of Neuropathy





Neuropathy GWAS

- 810 Subjects consented and genotyped on Illumina 610 quad
 - Discovery in 623 genetically defined European patients
 - 187 patient replication cohort (genetically defined non-European)
- No SNP reached genome-wide significance before adjustment
- Created priority SNP list based on:
 - P-value/rank
 - Biological plausibility
 - Previously reported associations
 - Gene function
 - LD with functional variant
 - Regulation of gene expression
 - Encode data



Neuropathy GWAS Priority SNPs

Rank	rsID	Gene	MAF	P-value	Adj p-val	HR	Plausible Biological Mechanism
1	rs11017056	-	0.22	4.7E-7	7.2E-8	2.83	-
2	rs875858	VAC14	0.06	7.7E-7	1.6E-6	3.43	Stabilizes FIG4 → causes CMT
3	rs10761189	FGD3	0.40	3.1E-6	5.3E-6	2.32	Functionally related to FGD4 (40101)
7	rs1027796	OPCM L	0.30	4.8E-6	8.3E-6	2.29	Neuronal outgrowth & connectivity (CNS)
15	rs17185211	DOK 6	0.23	1.1E-5	3.4E-5	2.30	Highly expressed in the developing CNS
26	rs478472	NAV1	0.08	1.7E-5	2.2E-5	3.25	Relevant to neuronal development
72	rs12805206	OPCM L	0.22	7.6E-5	1.3E-4	2.33	Neuronal outgrowth & connectivity (CNS)

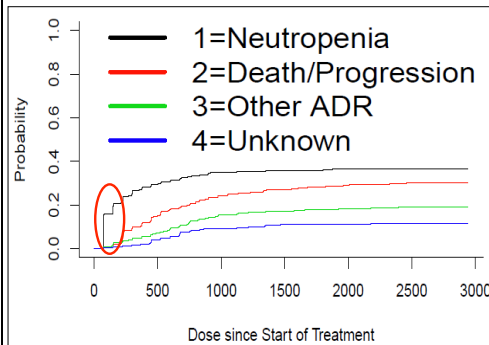
Toxicity Endpoints in 90401 (n=810)

Toxicity Endpoint	Docetaxel Toxicities			Bevacizumab Toxicities						
	Neutropenia		Neuro-pathy	Hypertension		Proteinuria		Thrombosis		Hemorrhage
	3+	4+		3+	2+	3+	2+	3+	2+	
Toxicity Endpoint	285 36%	161 20%	57 7%	86 11%	34 4%	44 6%	10 1%	53 7%	49 6%	79 10%
Completed tx w/o toxicity	2%	3%	4%	3%	3%	3%	4%	3%	3%	3%
Death/Progres.	31%	37%	40%	36%	38%	38%	39%	38%	39%	39%
Tx Terminating Adverse Event	19%	26%	32%	34%	37%	36%	38%	34%	35%	31%
Withdrew/other	12%	14%	17%	16%	18%	17%	18%	18%	18%	18%

Prioritize GWAS by:

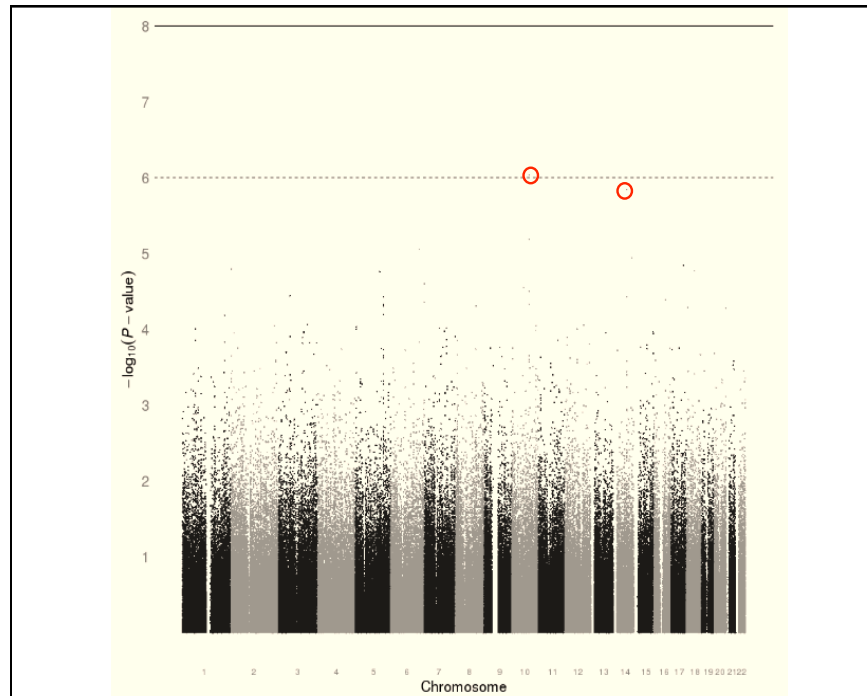
- Clinical relevance of toxicity
- Toxicity event rate
- Likelihood of genetic causal factor
- Absence of strong confounding

Neutropenia Event Rates



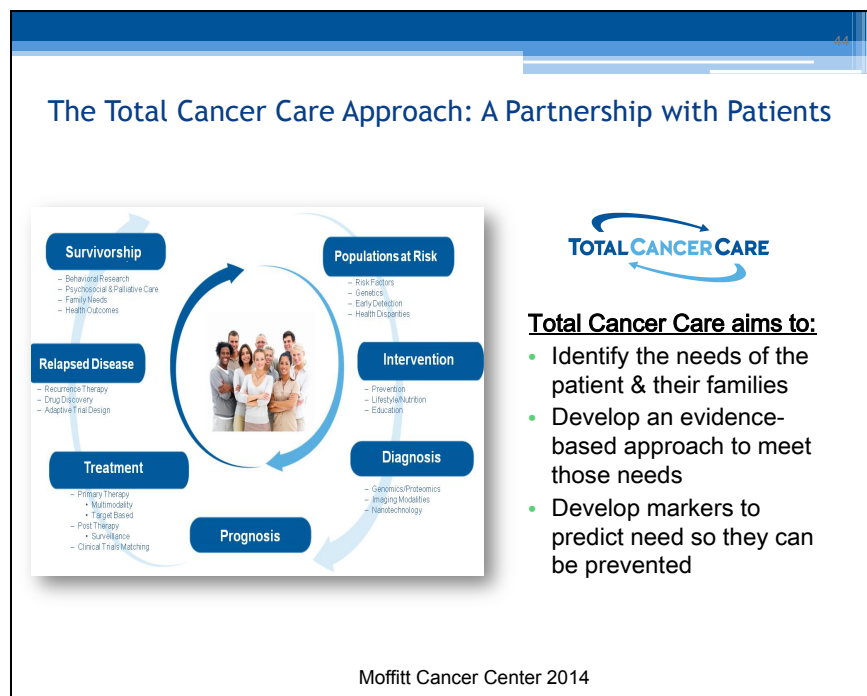
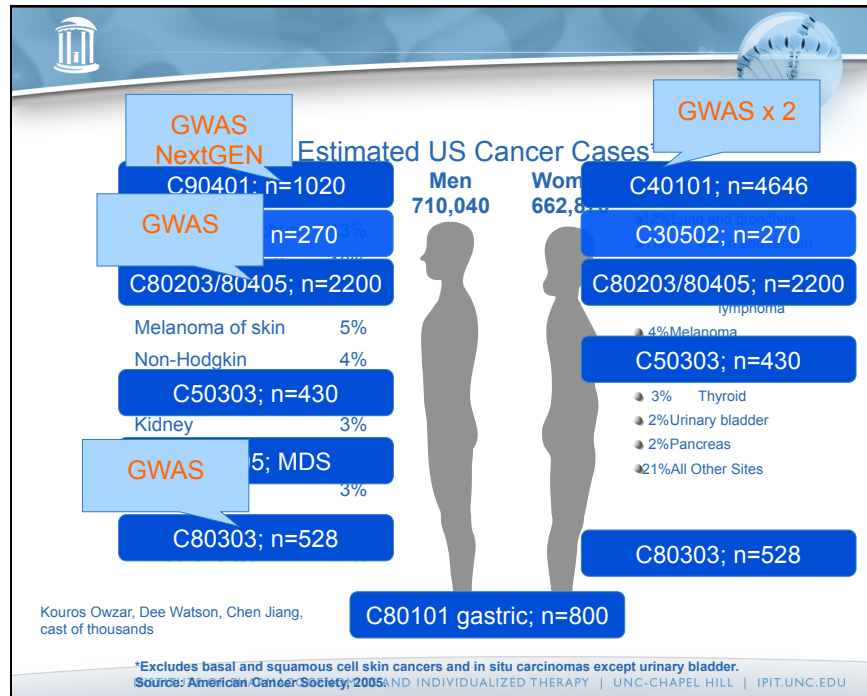
Cycle	G3+ Neut	%	Cum. %
1	124	44%	124 (44%)
2	39	14%	163 (58%)
3	24	8%	187 (66%)
4	19	7%	206 (73%)
5	11	4%	217 (77%)
6	9	3%	226 (80%)
7+	59	21%	285 (100%)

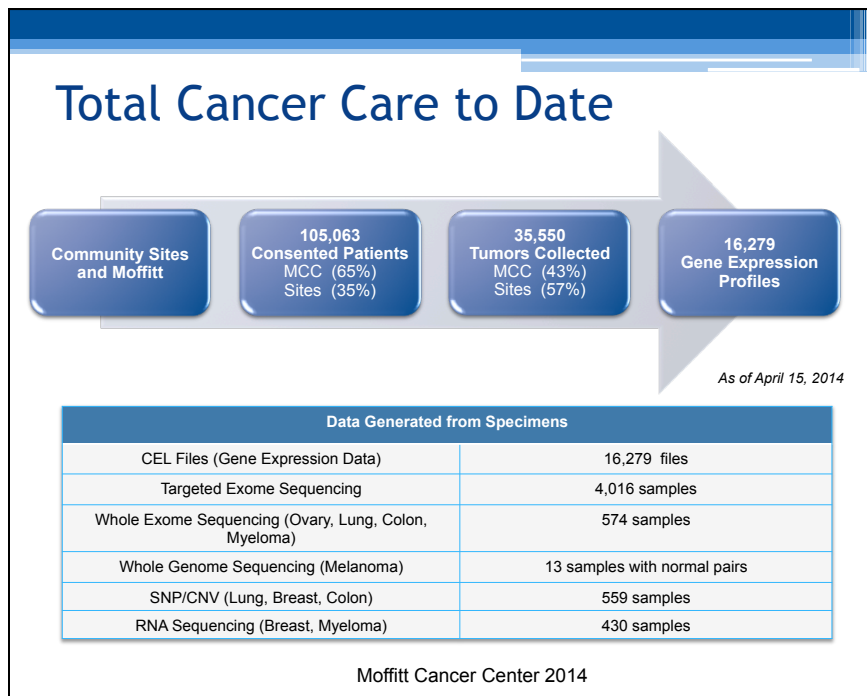
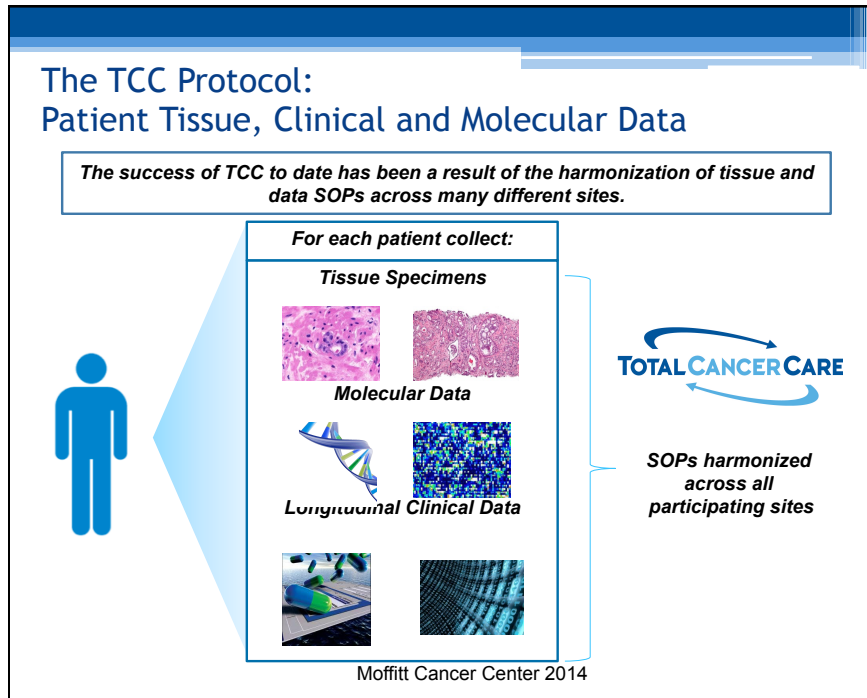
- Neutropenia groups for analysis
 - Case: grade 3+ neutropenia in cycles 1 or 2
 - Control: completed 2 full cycles without G3+ neutropenia
 - Excluded: treatment discontinued or reduced after cycle 1



Neutropenia GWAS Top 10 SNPs

Rank	rsID	Gene	MAF	B-Coeff	P-val	Biological Function or Associations
1	rs533722	RNLS	0.22	0.79	9.19E-07	Amine oxidase relevant to hypertension
2	rs12431732	ACTN1	0.07	1.14	1.42E-06	Congenital macrothrombocytopenia
3	rs1943987	RNLS	0.18	0.74	6.46E-06	LD with #1 (D'=0.98)
4	rs362895	GRM1	0.19	-1.03	8.91E-06	CNS neurotransmission
5	rs926788	SERPINA5	0.30	0.69	1.15E-05	Hemostasis and risk of melanoma
6	rs1318	PITPNC1	0.20	-0.98	1.43E-05	Cell signaling and lipid metabolism
7	rs12618922	TSSC1	0.30	0.66	1.59E-05	Tumor suppressor
8	rs2385427	TSSC1	0.28	0.67	1.62E-05	LD with #7 (D'=0.98)
9	rs16978131	KRT8P5	0.16	-1.15	1.68E-05	Pseudogene
10	rs11241793	ZNF608	0.12	0.88	1.74E-05	Associations with radiation sensitivity, cognitive impairment, & body weight

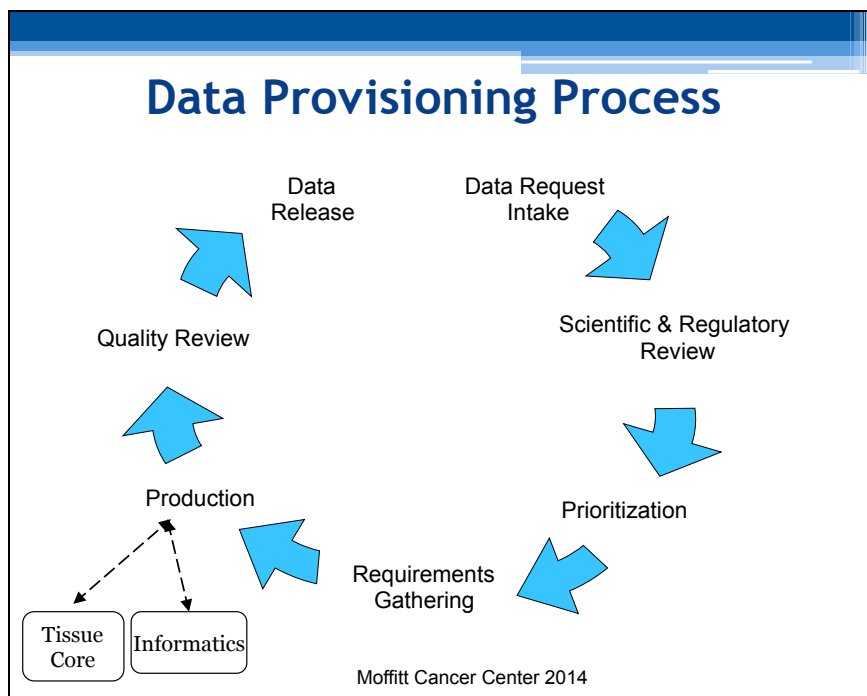


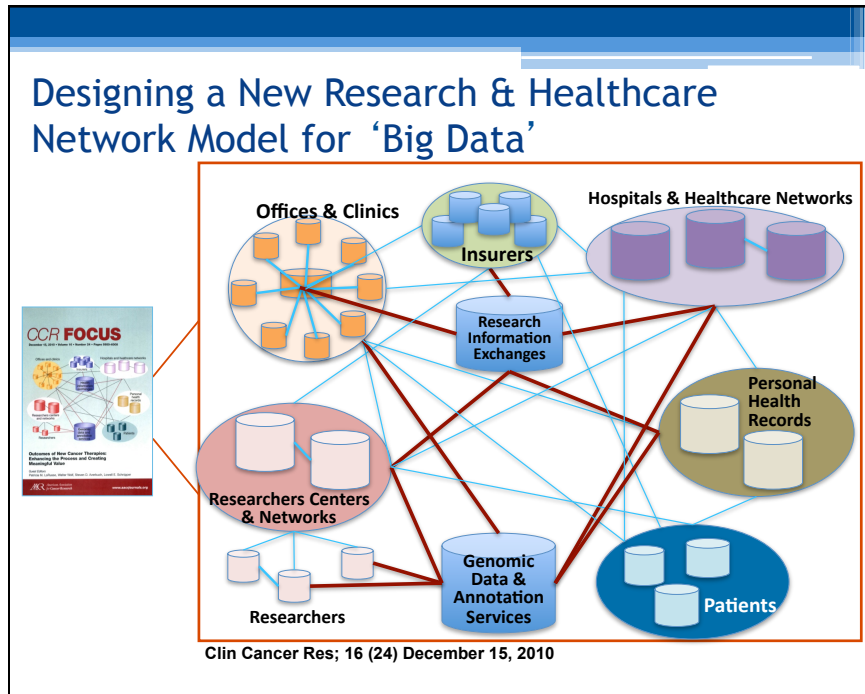



Querying via TransMed

Moffitt Cancer Center 2014

http://transmedprod/bisde_identified/bis_silvertight_shell.aspx







What needs to be done to determine hope vs hype?

- Find the 'right' biomarkers
- Validate in robust datasets
- Apply them!

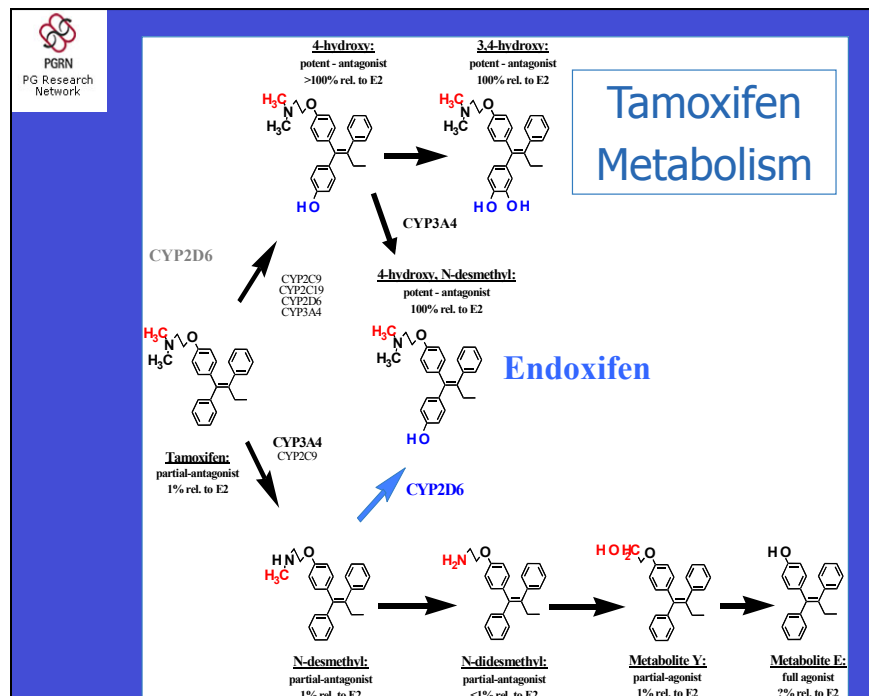
DeBartolo Family PERSONALIZED MEDICINE INSTITUTE | MOFFITT CANCER CENTER

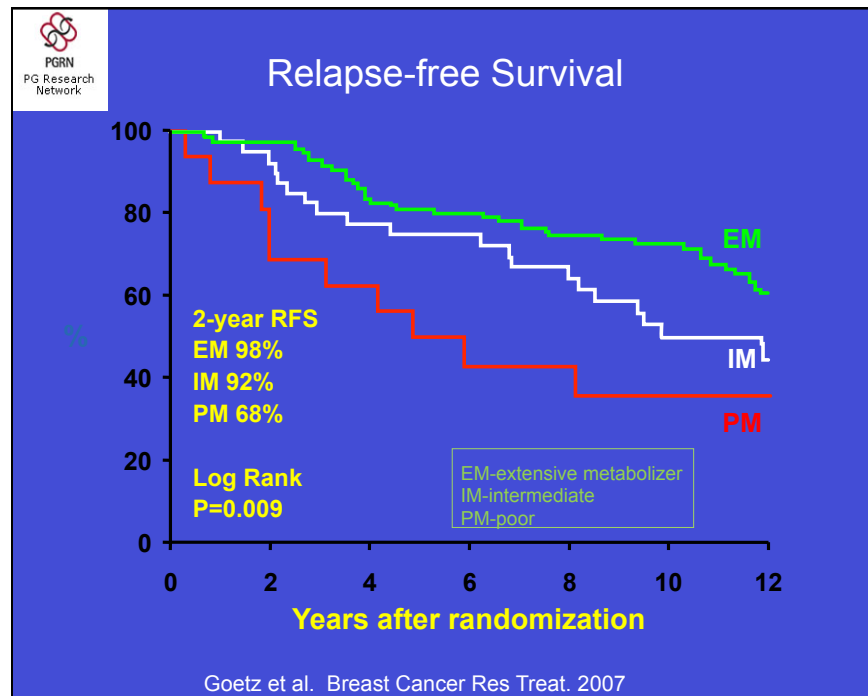
Pharmacogenomic examples-2014

- *bcr/abl* or 9:22 translocation—imatinib mesylate*
- HER2-*neu*—trastuzumab**
- C-kit mutations—imatinib mesylate**
- Epidermal growth factor receptor mutations—gefitinib
- BRAF-vemurafenib
- ALK-Crizotinib
- TPMT-mercaptopurine and azathioprine*
- UGT1A1-irinotecan**
- CYP2C9/VKORC1-warfarin*
- HLA-B*5701-abacavir .
- HLA-B*1502-carbamazepine .
- IL28B-interferon
- CFTR-ivacaftor
- CYP2C19-clopidogrel, voriconazole
- CYP2D6-5-HT3 receptor antagonists, antidepressants, ADHD drugs, and codeine derivatives*

DeBartolo Family
 PERSONALIZED MEDICINE INSTITUTE

MOFFITT
 CANCER CENTER

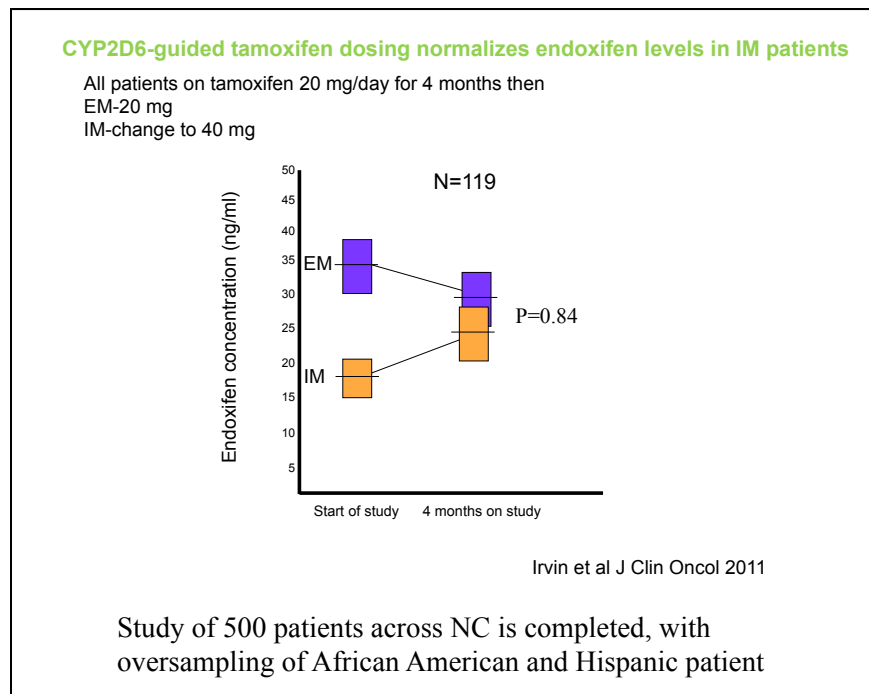
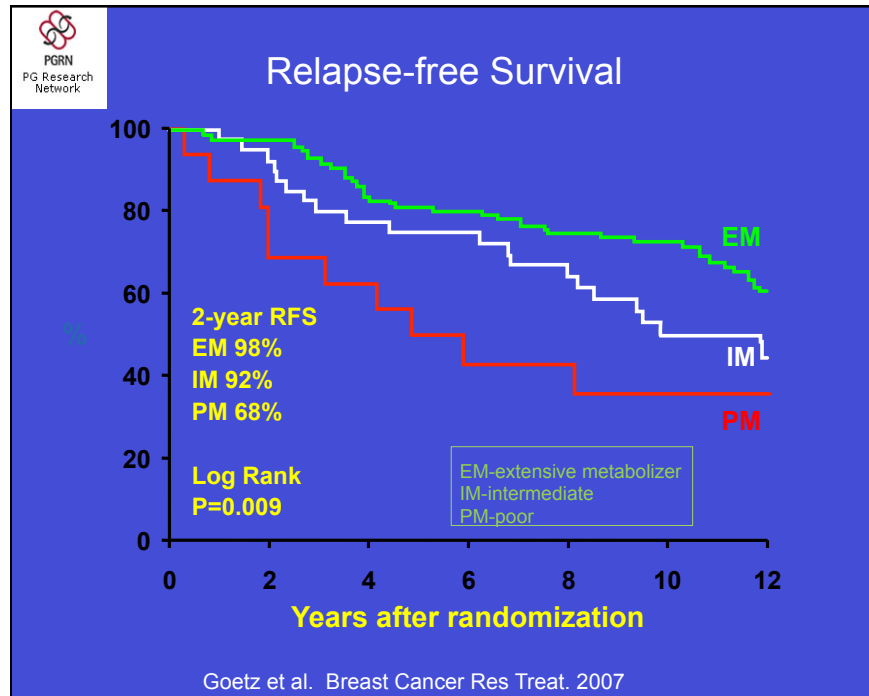




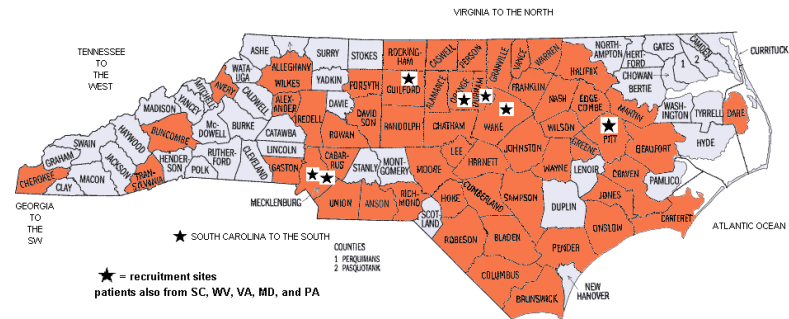
Adjuvant Tamoxifen and CYP2D6

- CYP2D6 associated with recurrence
 - Goetz et al. 2005, 2007 (USA)
 - Schroth et al. 2007 (Germany)
 - Kiyotani et al. 2008 (Japan)
 - Newman et al. 2008 (UK)
 - Xu et al. 2008 (China)
 - Okishiro et al. 2009 (Japan)
 - Ramon et al. 2009 (Spain)
 - Bijl et al. 2009 (Netherlands)
 - Schroth et al. 2009, 2010 (Germany, USA)
 - Fugisata et al. 2010 (Japan)
 - Lammers et al. 2010 (Netherlands)
 - Kiyotani et al. 2010 (Japan)
 - Thompson et al 2010 (UK)
 - Kiyotani et al 2012 (Japan)
- CYP2D6 not associated with recurrence
 - Wegman et al. 2005, 2007 (Sweden)
 - Nowell et al. 2005 (USA)
 - Abraham et al. 2010 (UK)
 - Goetz et al 2011 (USA)
 - Rae et al 2012 (UK)
 - Regan et al 2012 (USA/Europe)

INSTITUTE OF PHARMACOGENOMICS AND INDIVIDUALIZED THERAPY | UNC-CHAPEL HILL | IPIT.UNC.EDU



Implementation Science can be conducted where
most patients are treated



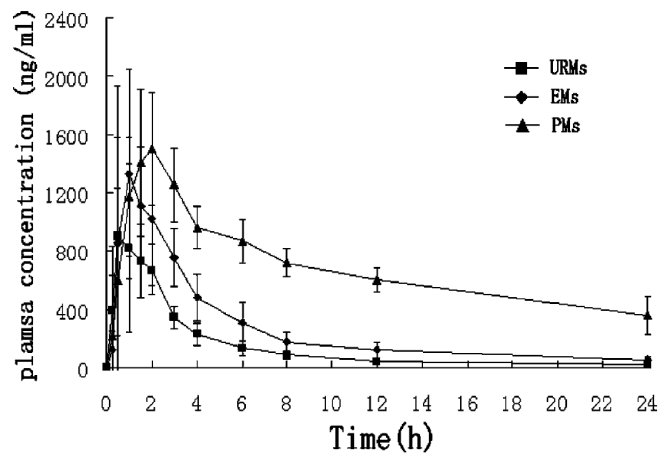
Voriconazole and CYP2C19: Clinical Implications

- Used to treat fungal infection
- Used as fungal prophylaxis in myeloid malignancies

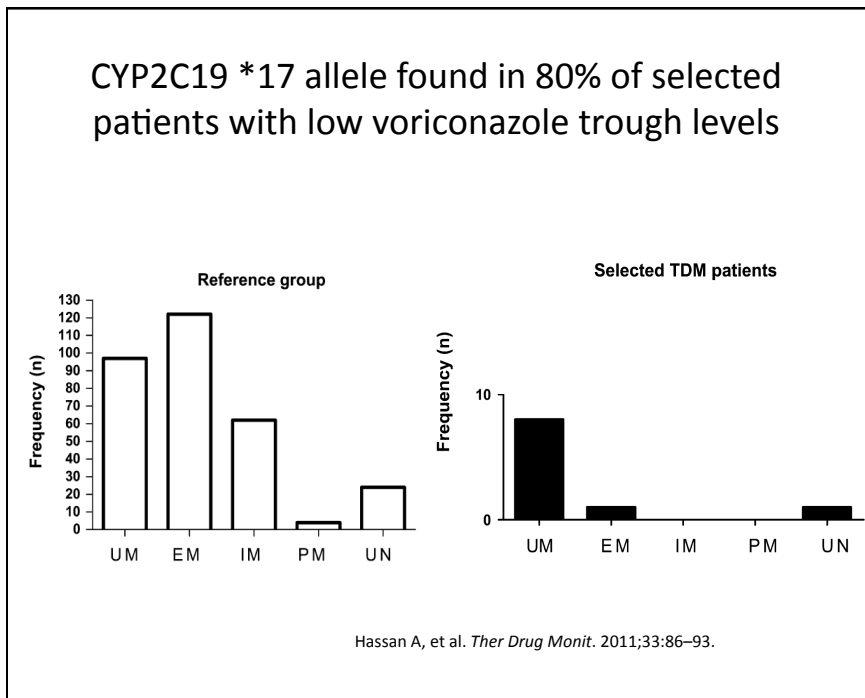
- Metabolized by CYP2C19, CYP2C9 and CYP3A4.
- A significant isoenzyme, involved in metabolism, is the CYP2C19, which exhibits polymorphism.
- Studies in caucasian and japanese poor metabolizers demonstrated on average, a 4-fold increase in AUC.
- Patients who are heterozygous extensive metabolizers have a average of a 2-fold higher AUC compared with homozygous extensive metabolizers

Product Information: VFEND(R) IV injection, oral tablets, suspension, voriconazole IV injection, oral tablets, solution. Roerig, New York, NY, 2008.

Plasma concentration–time curve of voriconazole after an oral dose of 200 mg in volunteers



Wang G, et al. *Eur J Clin Pharmacol.* 2009 Mar;65(3):281-5.



Genotyping for Ultrarapid Metabolizers in Adult BMT and AML Patient Populations Can Save Significant Healthcare Costs

Realistic Case
 Cost Savings Model Based on 100 Patients

	# of Patients	Cost of Genotyping	Incremental Savings by Avoiding IFI	Total
Cost of Screening Patients	100	(\$319.12)	-	(\$31,912)
Cost Savings from Genotyping	5	-	\$29,183	\$145,915
Total Cost Savings from CYP2C19 Screening Program				\$114,003
Total Savings/Patient				\$1,140

Assumptions:
 Estimated # of Patients with CYP2C19*17 = 30
 Predicted # of Patients to Develop IFI = 5.4
 Estimated Effectiveness of CYP2C19*17 Status Based Intervention = 94%
 Estimated # of IFI Cases Avoided by Genotyping = 5.4 x 0.94 = 5

Moffitt Cancer Center 2014

Genotyping for Ultrarapid Metabolizers in Adult BMT and AML
 Patient Populations Can Save Significant Healthcare Costs

Conservative Case
 Cost Savings Model Based on 100 Patients

	# of Patients	Cost of Genotyping	Incremental Savings by Avoiding IFI	Total
Cost of Screening Patients	100	(\$319.12)	-	(\$31,912)
Cost Savings from Genotyping	1.6	-	\$29,183	\$46,693
Total Cost Savings from CYP2C19 Screening Program				\$14,781
Total Savings/Patient				\$148

Assumptions:
 Estimated # of Patients with CYP2C19*17 = 1.8
 Estimated Effectiveness of Intervention Based on CYP2C19*17 Status = 90%
 Estimated # of IFI Cases Avoided by Genotyping = 1.8 x 90% = 1.6

Moffitt Cancer Center 2014

Genotyping for Ultrarapid Metabolizers in Adult BMT and AML
 Patient Populations Can Save Significant Healthcare Costs

Aggressive Case
 Cost Savings Model Based on 100 Patients

	# of Patients	Cost of Genotyping	Incremental Savings by Avoiding IFI	Total
Cost of Screening Patients	100	(\$319.12)	-	(\$31,912)
Cost Savings from Genotyping	30	-	\$29,183	\$875,490
Total Cost Savings from CYP2C19 Screening Program				\$843,578
Total Savings/Patient				\$8,436

Assumptions:
 Estimated # of Patients with CYP2C19*17 = 30
 Estimated # of IFI Cases Avoided by Genotyping = 5.4 x 0.94 = 30

Moffitt Cancer Center 2014

Cancer Pharmacogenomics and Tumor and Germline Genomes.

A Tumor genome

Gefitinib (red pill) is shown. A human figure has a red star on the lung labeled "Lung cancer". A diagram shows the EGF receptor (green) with EGF (blue) bound to it. Gefitinib (red) is shown as an "EGFR (kinase inhibitor)" blocking the receptor. "EGFR activating mutations" (green arrows) lead to "Increased tumor sensitivity to gefitinib".

B Germline genome

Innocen (blue pill) is shown. A human figure has a healthy liver and colon cancer. A diagram shows the metabolism of SN-38 (active drug, pink pill) to SN-38 glucuronide (inactive metabolite, blue pill). "Low expression of UGT1A1 and low level of glucuronidation" leads to more SN-38. "High expression of UGT1A1 and high level of glucuronidation" leads to more SN-38 glucuronide. "UGT1A1*28 (TA)_nTAA" and "UGT1A1 (TA)_nTAA" are shown as genetic variants.

Wang L et al. *N Engl J Med* 2011;364:1144-1153.

The NEW ENGLAND JOURNAL of MEDICINE

DeBartolo Family PERSONALIZED MEDICINE INSTITUTE

MOFFITT CANCER CENTER

Cancer Care is changing fast: the opportunity and the threat

A gross specimen of a tumor (red, fleshy mass) is shown. A histological section of a tumor (purple and pink stained tissue) is shown. A chromatogram (line graph) showing peaks is shown.

DeBartolo Family PERSONALIZED MEDICINE INSTITUTE

MOFFITT CANCER CENTER

PATIENT RESULTS

TUMOR TYPE: BONE MARROW LEUKEMIA LYMPHOIDIC CHRONIC (CLL)

Genomic Alterations Identified:
 TP53 R282G
 EP300 deletion exons 9-31
 DDX3X loss

THERAPEUTIC IMPLICATIONS

Genomic Alterations Detected	FDA Approved Therapies (in patient's tumor type)
TP53 R282G	None
EP300 deletion exons 9-31	None
DDX3X loss	None

APPENDIX

VARIANTS OF UNKNOWN SIGNIFICANCE

Note: One or more variants of unknown significance (VUS) were detected in this patient's tumor. These variants were not adequately characterized in the scientific literature at the time this report was issued and/or the genomic data were not available to make their significance unclear. We choose to include them here in the event that they become clinically significant.

BARD1 P358_S364del	CCND2 M2 T280_D283del	ERBB4 E499D	HIST1H1E A47V
LRP1B T1588P	MLL3 H307N_V920L	NKX2-1 A286T	TP53 Q281_R282insR
TSC2 A84V	? M2D AM		GHV

Clinical response but cytogenetic evolution
 Gene may be described in ct, but diff. mut


Moffitt Cancer Center 2014
 DeBartolo Family PERSONALIZED MEDICINE INSTITUTE
 MOFFITT CANCER CENTER


PGENI


- Modern medical therapy is a key component of improved health and a sizeable part of health budgets
- Selection of medications for each indication is a combination of clinical consensus, access/cost of drugs, and familiarity
- Medicine prioritization is a high stakes undertaking for developing countries
- We need to use all available data



© PGENI 2014

Source of data for patient therapy selection

Best option: **individual** 

Good: **relevant geographic/
ethnic/racial population** 

Worst: **inferred world population** 

PGENI  Treating the Population.
Impacting the World. 



Overview of study plan

- Identify common ethnic racial groups (>10%)
- Collect 500 blood samples (250 male; 250 female) from each ethnic group.
*Preference is for healthy volunteers (e.g., blood donors).
 Only gender, ethnicity, and age known for each sample.*
- Genotype for variants of interest
- Generate recommendations for medication selection

Africa example

<p>The Gambia:</p> <table border="0"> <tr><td>Fulani</td><td>18%</td></tr> <tr><td>Jola</td><td>10%</td></tr> <tr><td>Mandinka</td><td>42%</td></tr> <tr><td>Wolof</td><td>16%</td></tr> </table>	Fulani	18%	Jola	10%	Mandinka	42%	Wolof	16%	<p>Egypt:</p> <p>Eastern Hamitic (Egyptians, 99% Bedouin, and Berbers)</p>
Fulani	18%								
Jola	10%								
Mandinka	42%								
Wolof	16%								

© PGENI 2014

PGENI  Treating the Population.
Impacting the World. 

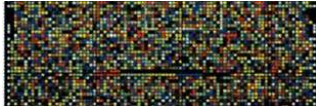
Selection of drugs and genes

- Focused on systemic drugs from WHO Essential Medicines List (<http://www.who.int/>)
- Conducted text mining for metabolism, transport and drug target proteins
 >300,000 articles reviewed
- Mined literature for allele frequencies of key SNPs in key genes

316 drugs > 206 systemic (oral / IV)

↓

Text mining →





154 Essential Genes*

→

230 Essential Variants*


*to date




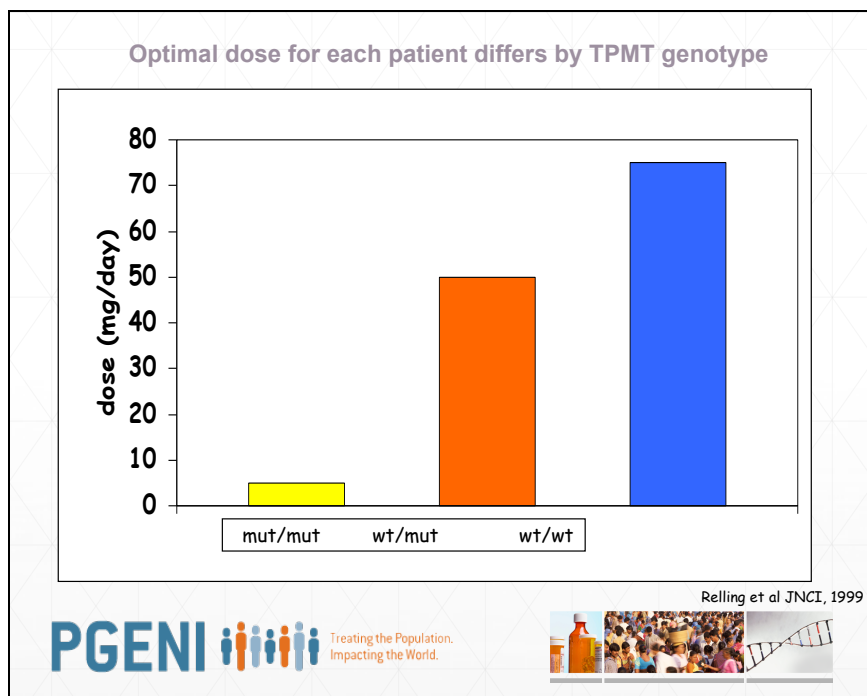
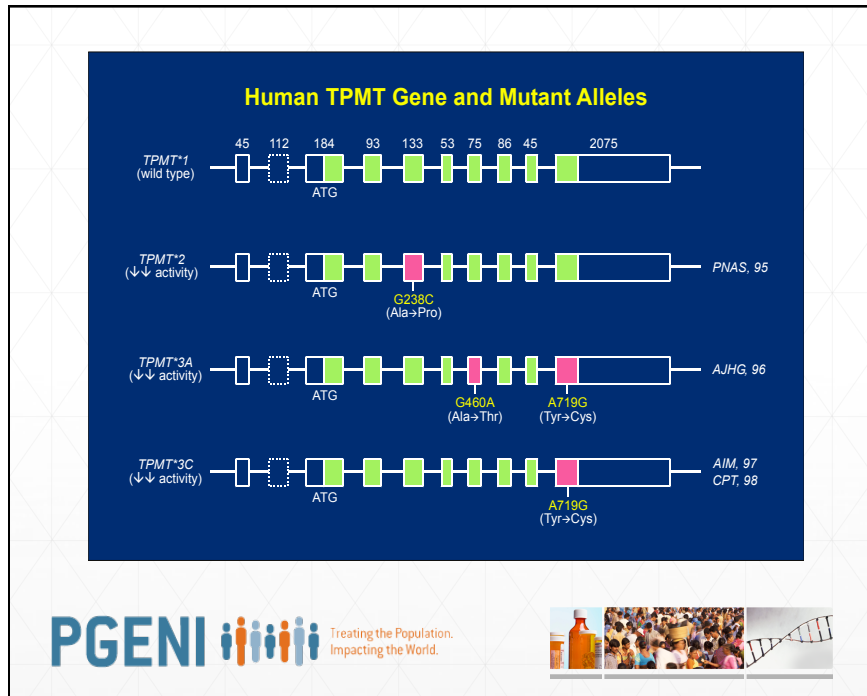


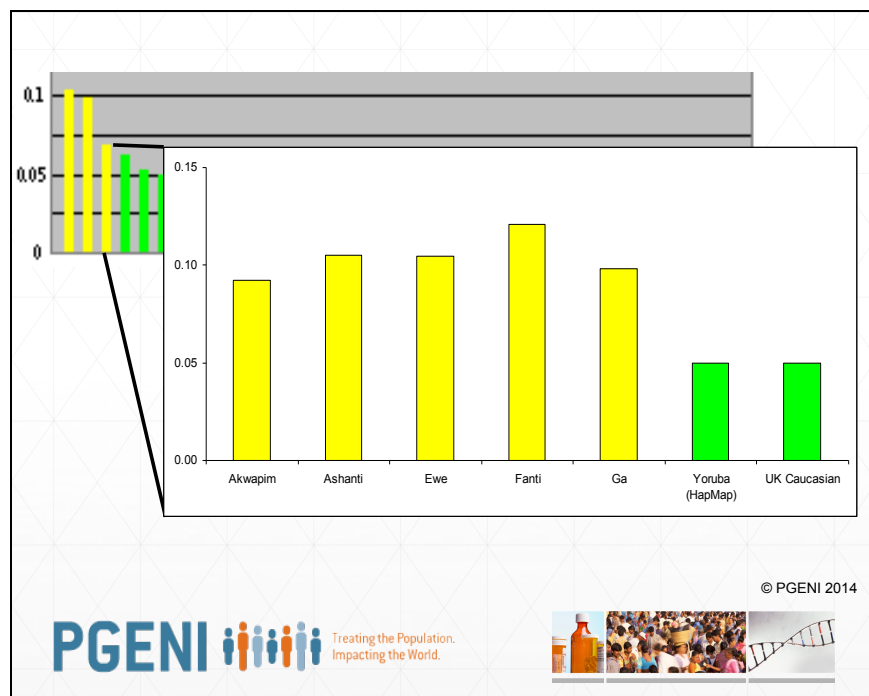
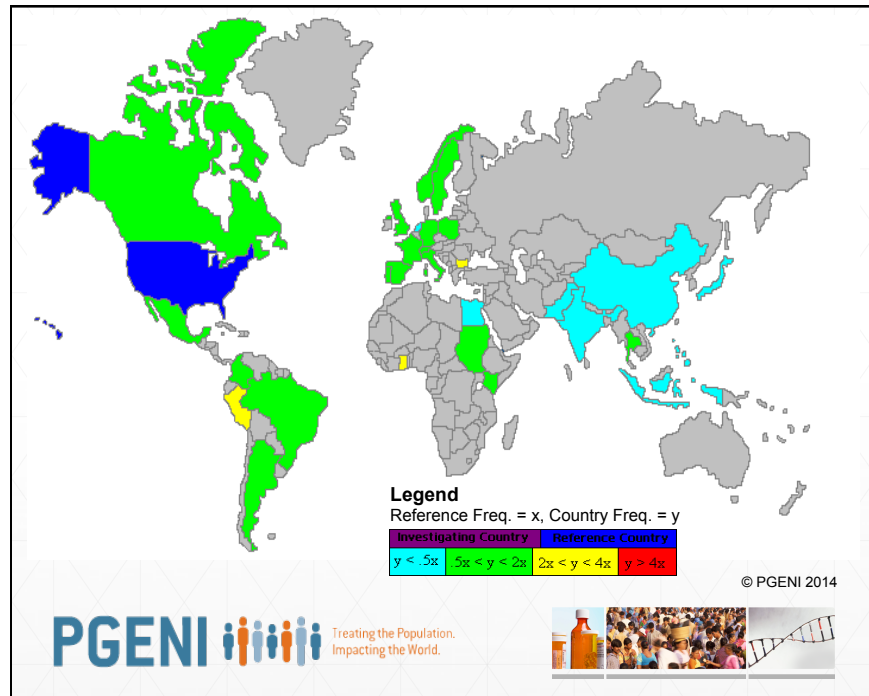
Pharmacogenomic examples-2014

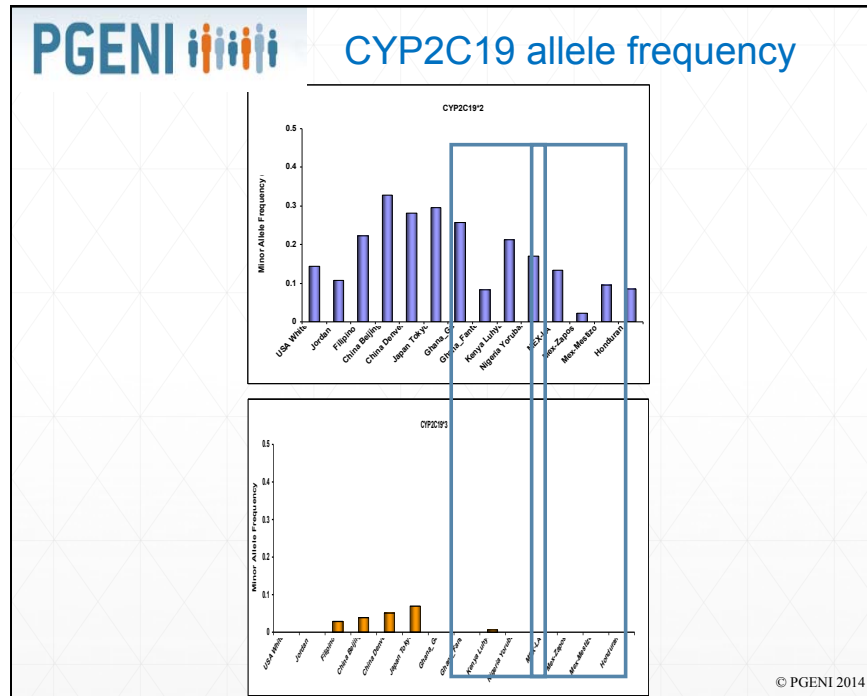
- *bcr/abl* or 9:22 translocation—imatinib mesylate*
- HER2-*neu*—trastuzumab**
- C-kit mutations—imatinib mesylate**
- Epidermal growth factor receptor mutations—gefitinib
- BRAF-vemurafenib
- ALK-Crizotinib
- TPMT-mercaptopurine and azathioprine*
- UGT1A1-irinotecan**
- CYP2C9/VKORC1-warfarin*
- HLA-B*5701-abacavir .
- HLA-B*1502-carbamazepine .
- IL28B-interferon
- CFTR-ivacaftor
- CYP2C19-clopidogrel, voriconazole
- CYP2D6-5-HT3 receptor antagonists, antidepressants, ADHD drugs, and codeine derivatives*











Type of output

Surveillance - identifying population subgroups at higher risk of toxicity or treatment failure

Prioritization - assisting the treatment selection from among WHO recommended therapies



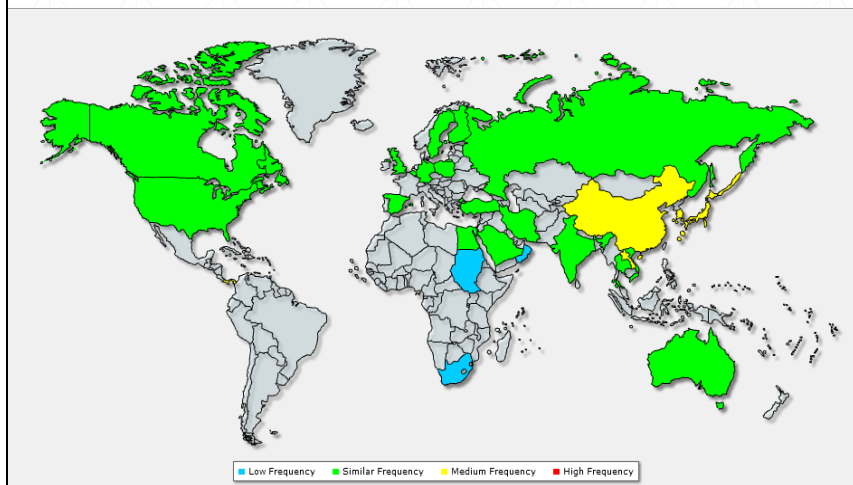
PGENI Surveillance example: Tuberculosis

Drug	Gene	Allele	Effect	Associated	Probably Associated	Possibly Associated	Not Associated	No Data Available
Isoniazid	NAT2	*5/*6/*7	Efficacy				X	
			Hepatotoxicity	X				
	CYP2E1	*5B	Neuropathy		X			
			Efficacy				X	
Rifampicin	ESB		Hepatotoxicity	X				
			Efficacy				X	
			Toxicity				X	
Pyrazinamide	XDH		Efficacy					X
			Hepatotoxicity			X		
Ethambutol	MTND4		Efficacy					X
			Optic neuropathy			X		
Streptomycin	MTRNR1		Efficacy					X
			Ototoxicity		X			

© PGENI 2014





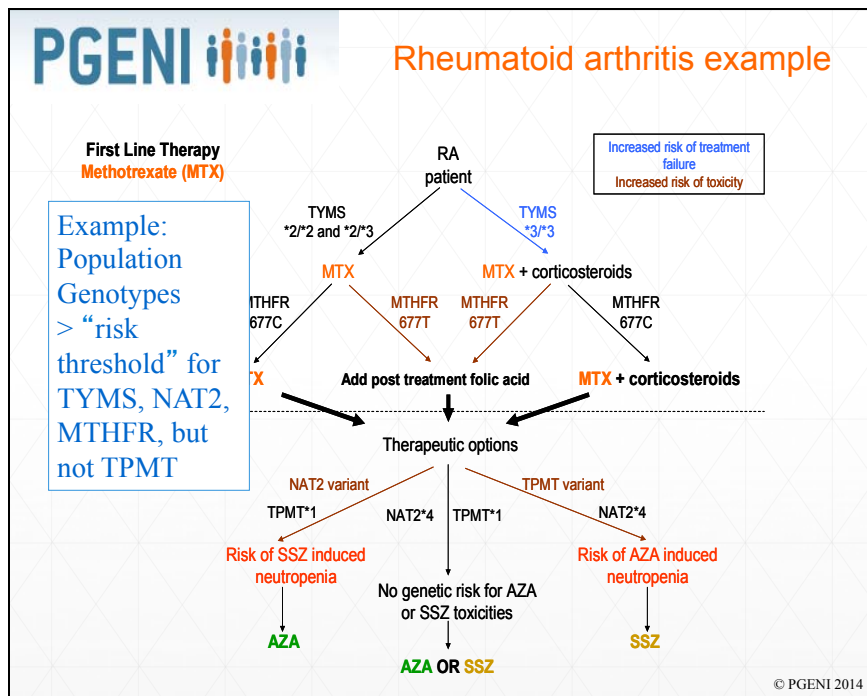
NAT2 *4

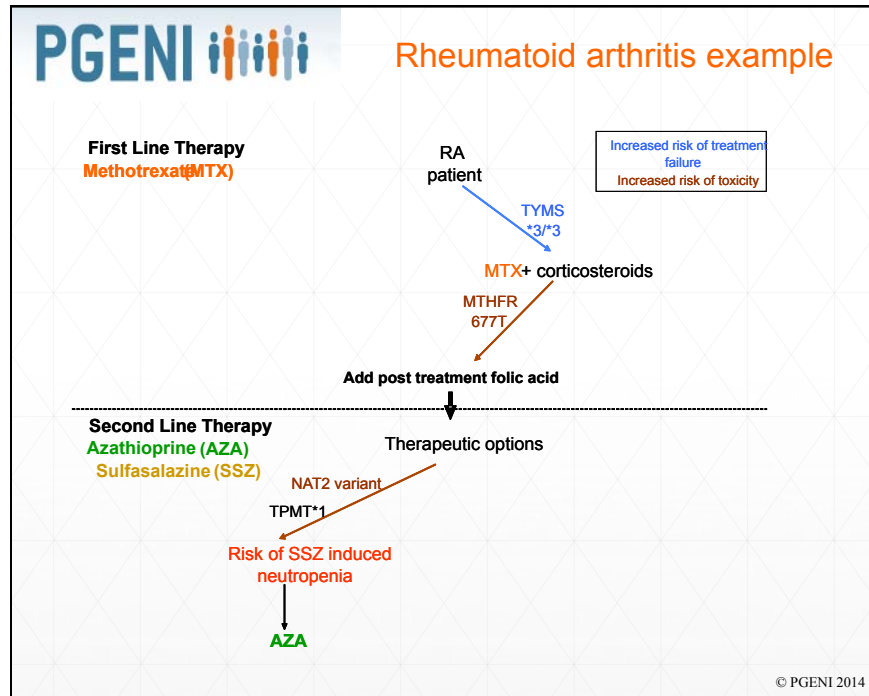


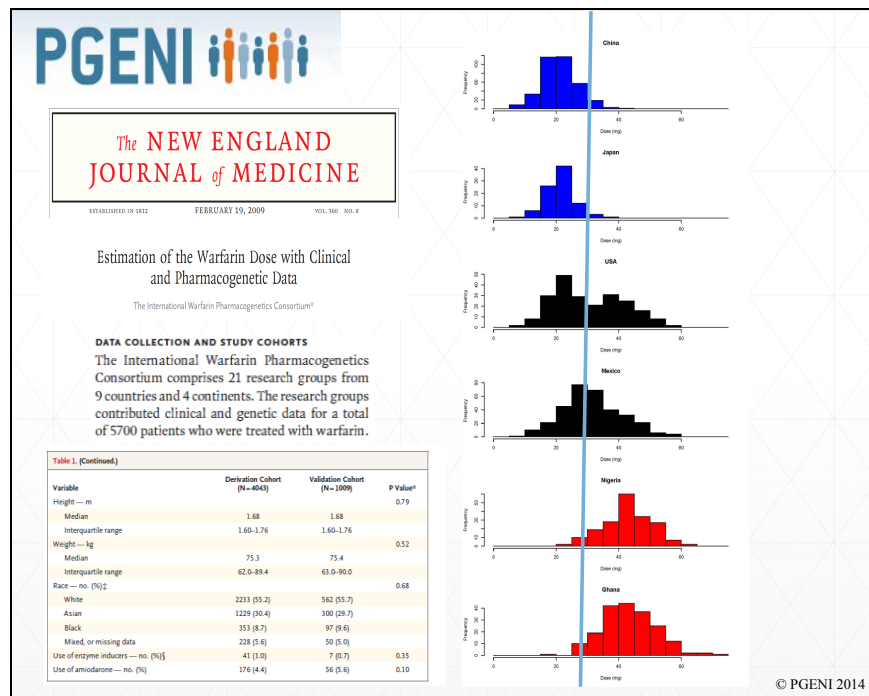
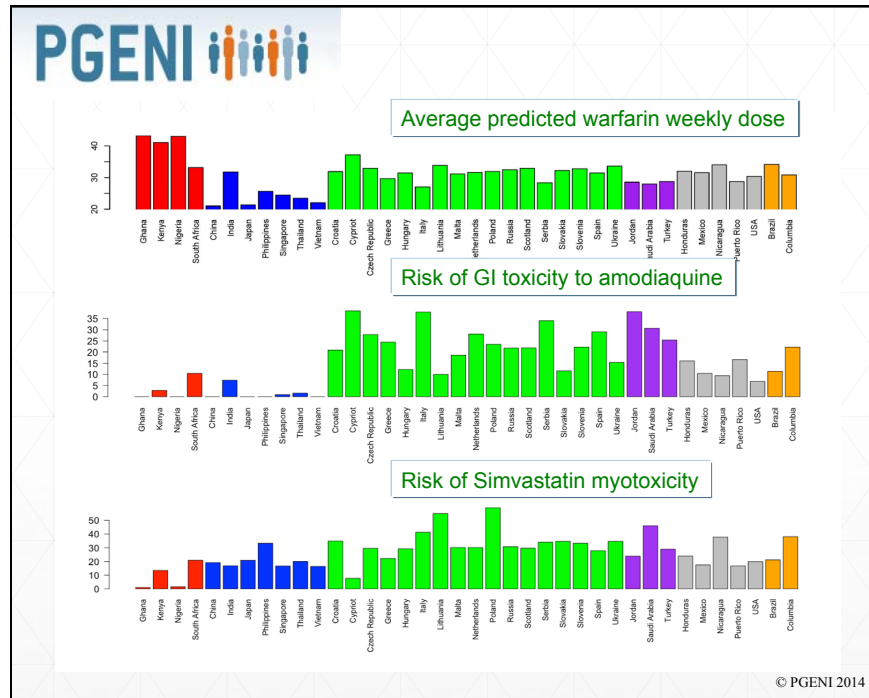
Type of output

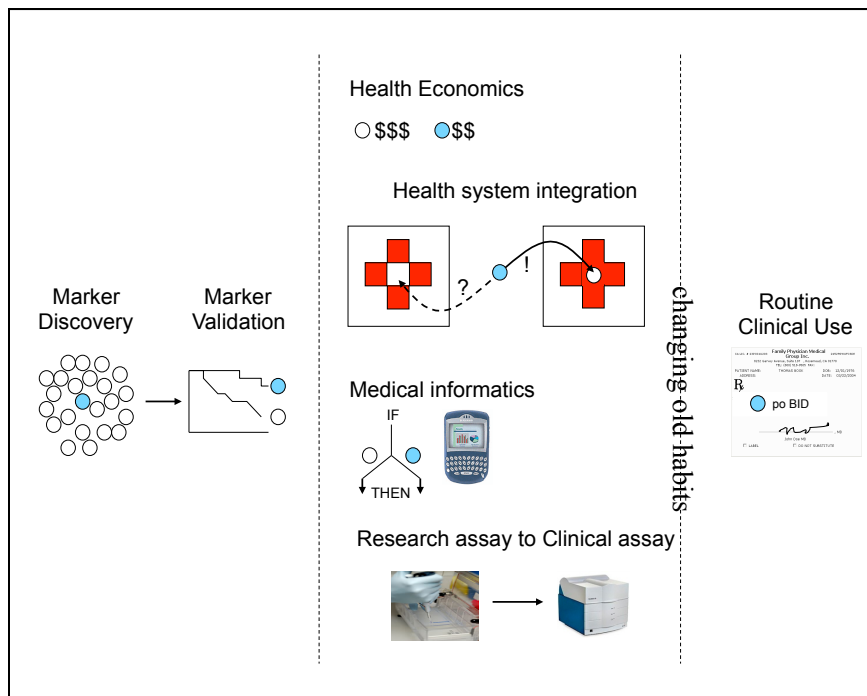
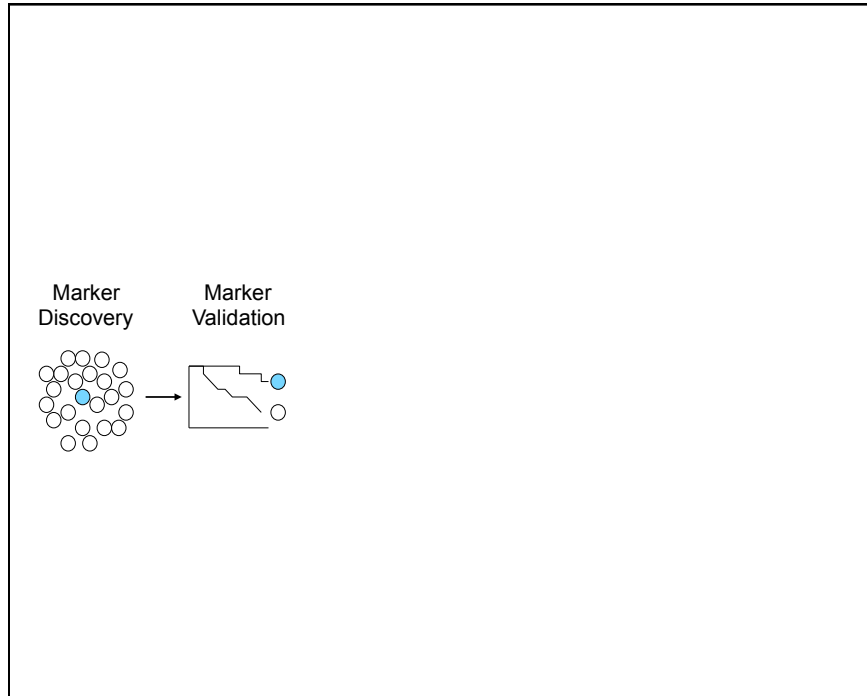
Surveillance - identifying population subgroups at higher risk of toxicity or treatment failure

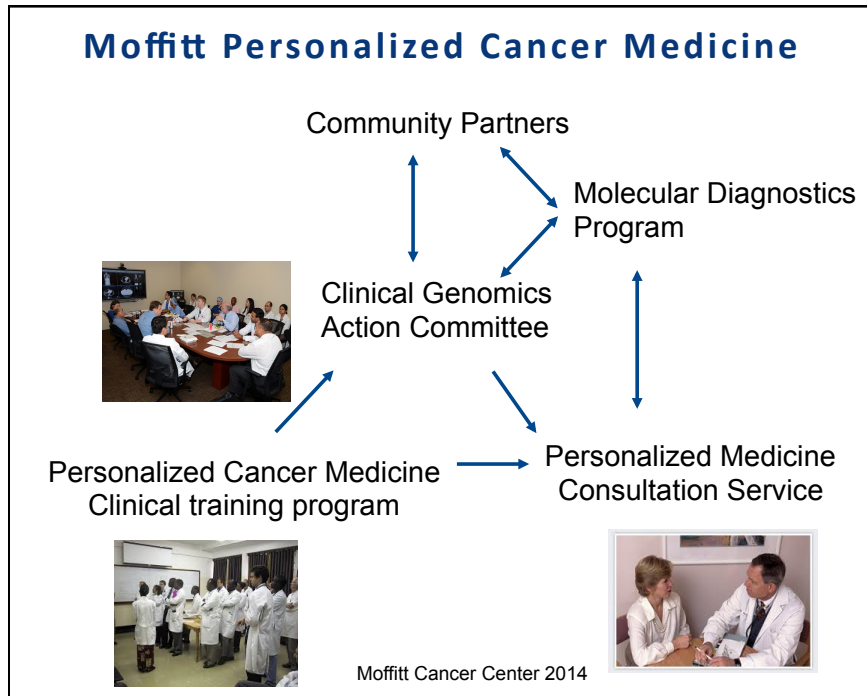
Prioritization - assisting the treatment selection from among WHO recommended therapies









Clinical Risk Panel: easier to test all than some


- Clinical pathway-driven care
- Adhere to cancer risk guidelines
- Identify underlying predisposition to severe toxicity
- Mitigating risk of untoward drug effects

A pie chart illustrating the composition of a Clinical Risk Panel. The chart is divided into three segments: a large blue segment representing 'inherited cancer syndromes', a smaller red segment representing 'inherited cardiac/nerve/heme syndromes', and a small green segment representing 'pharmacogenomics'. A legend to the right of the chart identifies these categories.

Moffitt Cancer Center 2014

DeBartolo Family
PERSONALIZED MEDICINE INSTITUTE

MOFFITT
CANCER CENTER




I have ears, but cannot hear

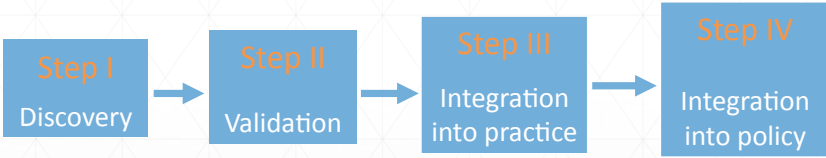
- 44 year old white male (CSO at a NC biotech)
- AV block 2^o congenital heart disease
- Presents for placement of epicardial pacemaker
- Tells cardiologist, CT surgeon, anesthesiologist, and admitting team (cardiology fellow, resident, intern) that an executive physical revealed genetic data relevant to pain control and anticoagulation
- Adequate pain control (4/10) in recovery room on MS
- moved to CCU and switch to oxycodone during the night, waking up in severe pain (10/10), ignored x 24 hours
- Student and PharmD recognized CYP2D6 PM and patient was switched to hydromorphone (5/10)

DeBartolo Family
PERSONALIZED MEDICINE INSTITUTE

MOFFITT
CANCER CENTER



Translational science: The steps to success



```
graph LR; A[Step I  
Discovery] --> B[Step II  
Validation]; B --> C[Step III  
Integration  
into practice]; C --> D[Step IV  
Integration  
into policy];
```

DeBartolo Family
PERSONALIZED MEDICINE INSTITUTE

MOFFITT
CANCER CENTER