

C G T A C G T A
A C G T A C G T

Extramural Training Opportunities

Heather A. Colley, M.S.

Program Officer, Division of Genomic Medicine

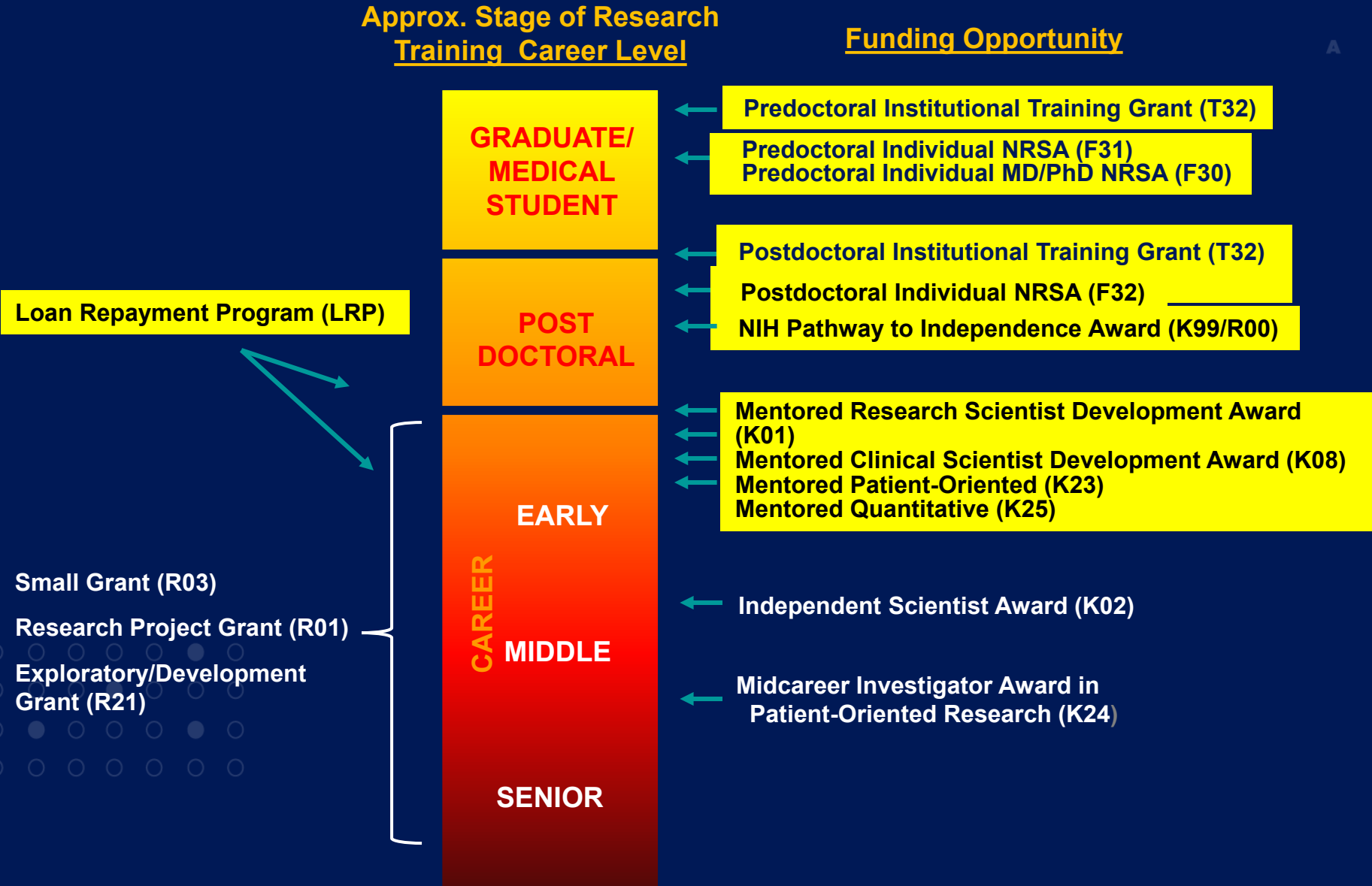
February 7, 2019



National Human Genome
Research Institute

—
The **Forefront**
of **Genomics**
—

Early Career Funding Opportunities & Career Development Timetable



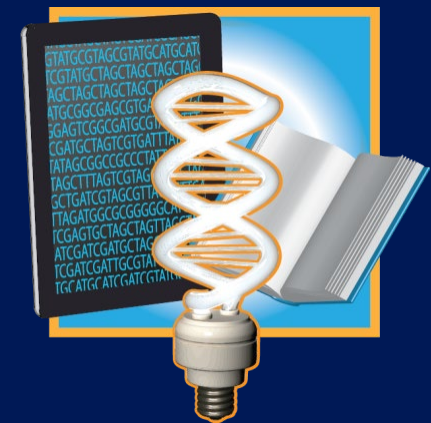
Training Mechanisms

- Institutional Training Grants (T32)
- Diversity Action Plan (R25)
- Course Development (R25)
- Career Awards (K01, K08, K99, K43)
- Fellowships (F30, F31, F32)
- Diversity/Re-entry Supplements
- Loan Repayment Program (LRP)

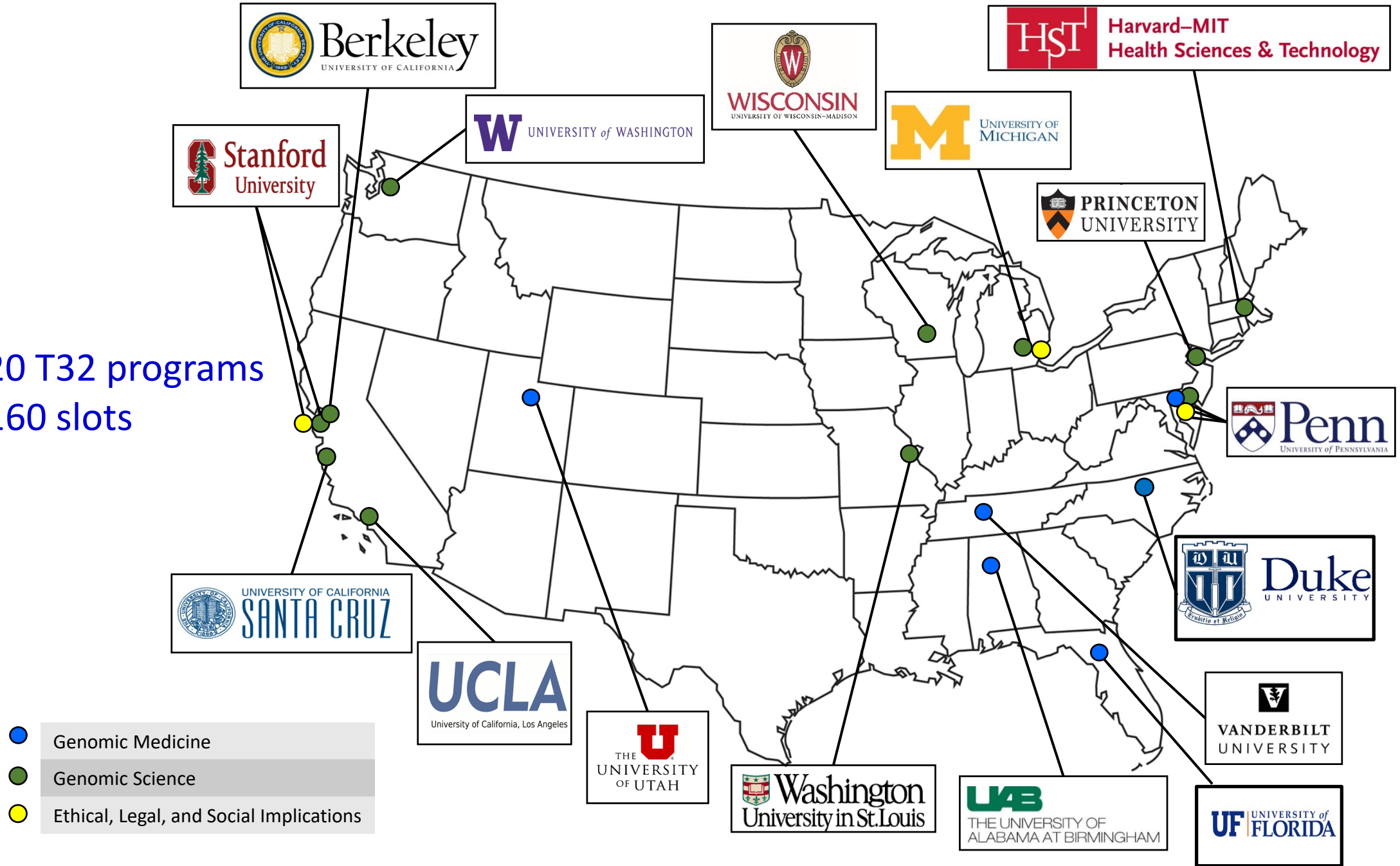


Genomic Medicine T32 Guidelines

- Trainee level: **Post-docs ONLY**
 - MD or PhD degrees or equivalent
- Up to 6 trainee slots per year
- Two tracks:
 - 1) Focus on basic research
 - 2) Focus on clinical research (not clinical care of patients)
- Flexible didactic curriculum, seminars, supervised research/training
- Team science approach
- Joint mentorship
- ELSI training is an essential component
- PA-18-403 and NOT-HG-14-017



20 T32 programs
160 slots

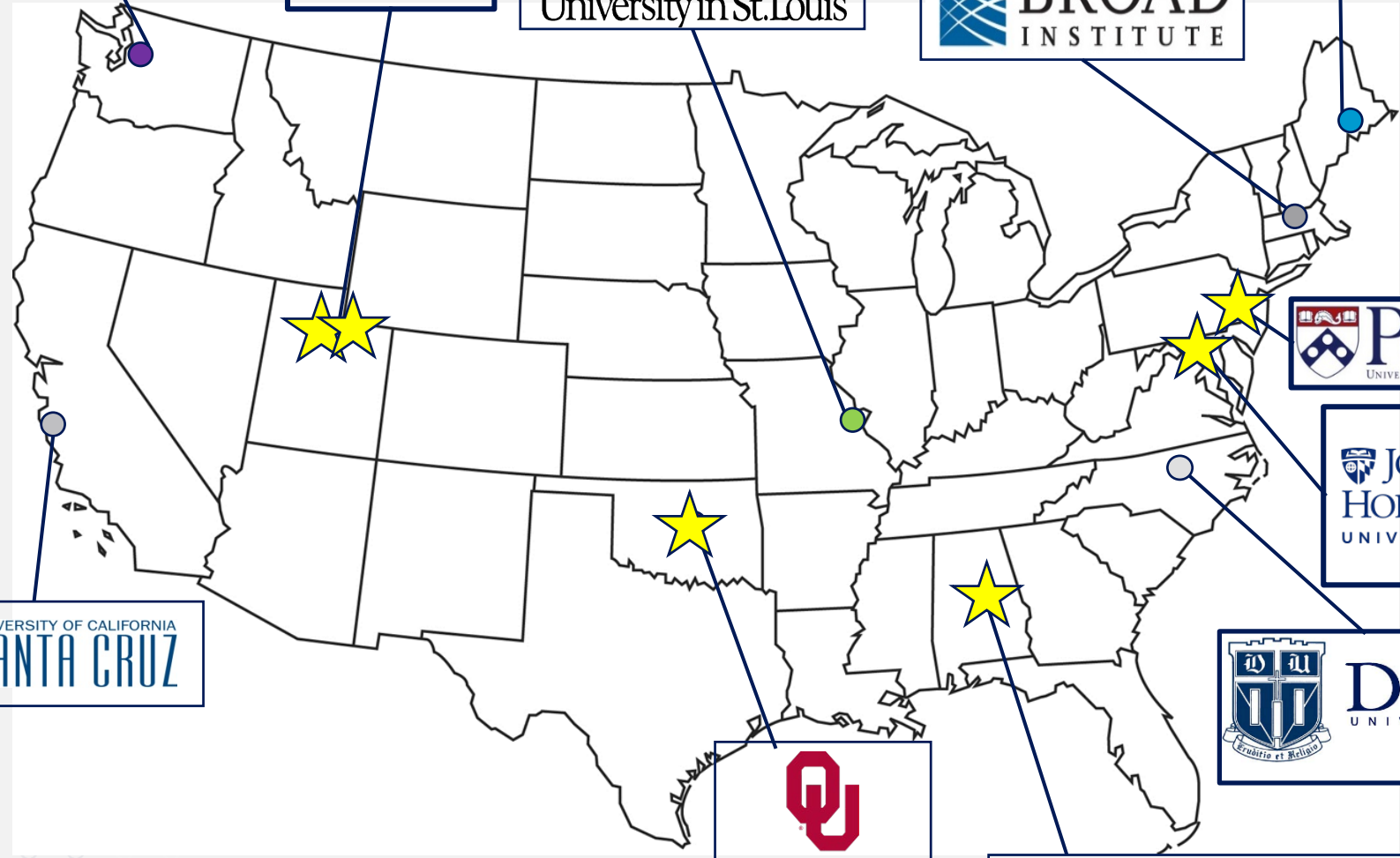


NHGRI Diversity Action Plan (R25)

- Expose URM students to genomics
- Pursue a career biomedical sciences
- Educational activities
- Skills development for grad school
- Institution must have a strong genomics research program
- Limited to: undergrads, post-bacc, and graduate students



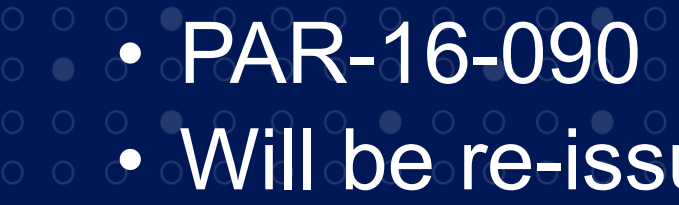
• PAR-16-345



★ Indicates new in FY18

rses

- PAR-16-090
- Will be re-issued spring 2019 *changes coming*



Protected Research Time

- Clinical Investigator Development Award (K08)
*Focus on genomic medicine
- Research Scientist Development Award (K01)
*Focus on genome science & ELSI
- Pathway to Independence Award (K99/R00)
- Emerging Global Leaders Award (K43)
*Research scientists from LMIC countries

Fellowships

- **MD/PhD or other Dual Degree (F30)**
- **Pre-doctoral (F31)**
- **Post-doctoral (F32)**
- **Senior Fellows (F33)**



Promoting Workforce Diversity

- Eligible NHGRI awardees can apply
- Administrative supplements; Two years of support
- Recruit & support students, post-docs, and eligible investigators
- Underrepresented minorities
- Individuals with disabilities
- Individuals from disadvantaged backgrounds
- Research experience must be an integral part of funded parent award
- Potential to contribute significantly to career development of candidate
- NOT-HG-19-010

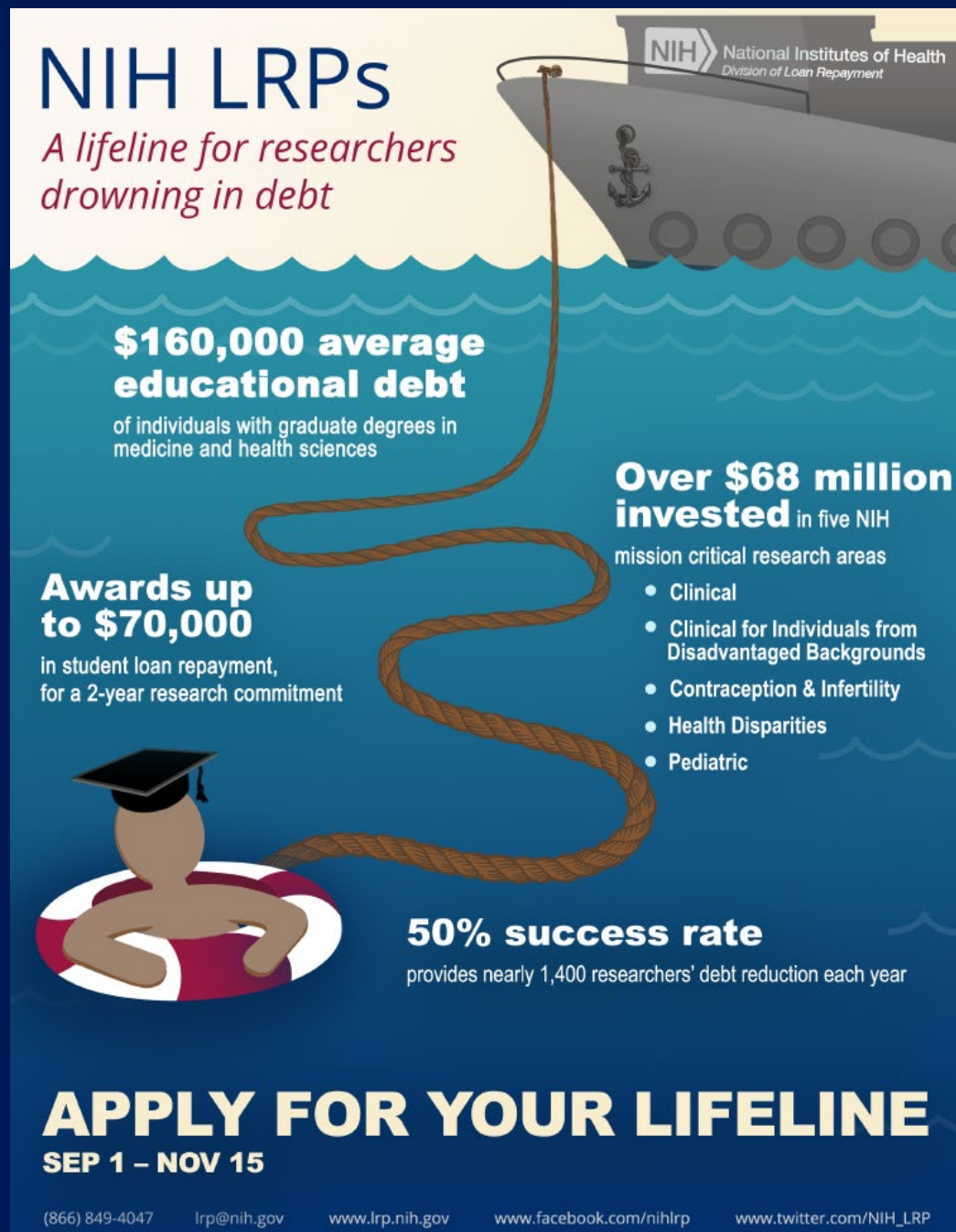


www.lrp.nih.gov

Applications due
November 2019

NHGRI contact:

Heather Colley
junkinsh@mail.nih.gov

The poster is set against a blue background with white wavy lines representing water. At the top, a grey ship with the NIH logo and 'National Institutes of Health Division of Loan Repayment' is shown. A thick brown rope extends from the ship down to a person in a red and white life preserver. The person is wearing a black graduation cap. The text is arranged around these central elements.

NIH LRPs
A lifeline for researchers drowning in debt

\$160,000 average educational debt
of individuals with graduate degrees in medicine and health sciences

Awards up to \$70,000
in student loan repayment, for a 2-year research commitment

Over \$68 million invested in five NIH mission critical research areas

- Clinical
- Clinical for Individuals from Disadvantaged Backgrounds
- Contraception & Infertility
- Health Disparities
- Pediatric

50% success rate
provides nearly 1,400 researchers' debt reduction each year

APPLY FOR YOUR LIFELINE
SEP 1 – NOV 15

(866) 849-4047 lrp@nih.gov www.lrp.nih.gov www.facebook.com/nihlrp www.twitter.com/NIH_LRP

Training and Career Development

March 2018 Meeting –UCLA



April 2019 Meeting – St. Louis



A C G
C G T
A C G

Questions?

Contact:
Heather Colley
junkinsh@mail.nih.gov





The **Forefront**
of **Genomics**[®]