



THE FUTURE OF NURSING RESEARCH: INNOVATION, COLLABORATION, AND IMPACT

A PRESENTATION TO THE NATIONAL ADVISORY COUNCIL FOR HUMAN GENOME RESEARCH

Shannon N. Zenk, PhD, MPH, RN, FAAN
Director, NINR

Overview

- My Scientific Start
- NINR's Strategic Plan
- Partnership and Collaboration
- Discussion



**National Institute
of Nursing Research**



My Scientific Start



Community Inequalities



The National Academies of
SCIENCES • ENGINEERING • MEDICINE

CONSENSUS STUDY REPORT

The Future of Nursing 2020–2030

Charting a Path
to Achieve Health Equity



NATIONAL ACADEMY OF MEDICINE



NATIONAL ACADEMY of MEDICINE




Robert Wood Johnson Foundation



NATIONAL INSTITUTE OF NURSING RESEARCH



2022-2026 STRATEGIC PLAN



“NINR Mission: Leading nursing science to solve pressing health challenges and inform practice and policy – optimizing health and advancing health equity into the future.”



All NINR-Supported Research:

- Tackles today's pressing health challenges and stimulates discoveries to prepare for, prevent, or address tomorrow's challenges
- Discovers solutions across clinical, community, and policy settings to optimize health for individuals, families, communities, and populations
- Advances equity by removing structural barriers from research, cultivating diversity in perspectives and ideas, and fostering inclusion and accessibility in designing, conducting, and participating in research
- Is innovative, develops or applies the most rigorous methods, and has the potential for the greatest impact on health

Research Lenses – Examining Health Challenges



Health Equity



**Social Determinants
of Health**



**Population and
Community Health**



**Prevention and Health
Promotion**



**Systems and Models
of Care**

Health Equity

Reduce and eliminate the systemic and structural inequities that place some at an unfair, unjust, and avoidable disadvantage in attaining their full health potential.



Social Determinants of Health

Identify effective approaches to improve health and quality of life by addressing the conditions in which people are born, live, learn, work, play, and age.



Population and Community Health

Address critical health challenges at a macro level that persistently affect groups of people with shared characteristics.



Prevention and Health Promotion

Prevent disease and promote health through the continuum of prevention—from primordial to tertiary.



Systems and Models of Care

Address clinical, organizational, and policy challenges through new systems and models of care.



Nursing Research Through NINR's Research Lenses

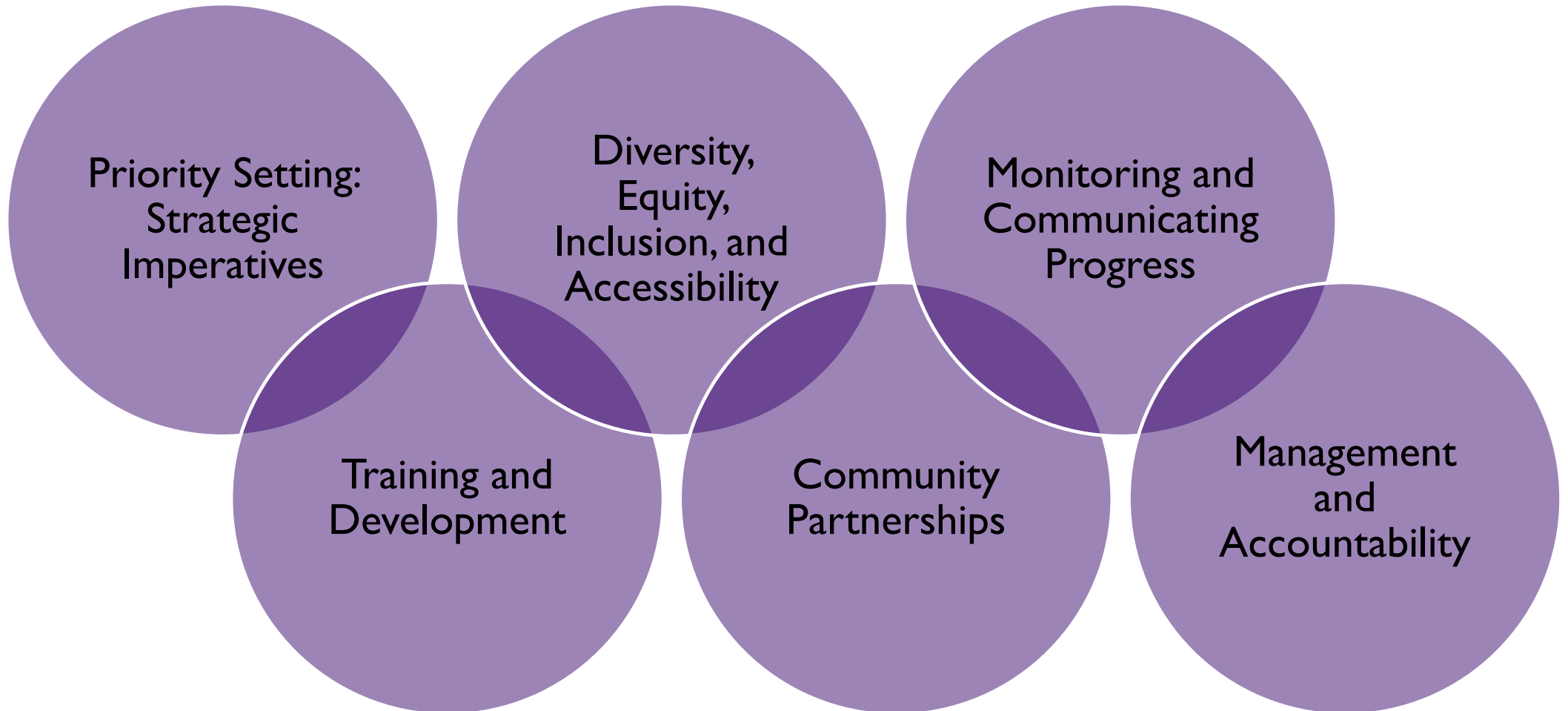


Area of Interest*	Percent of Budget	NIH Rank as a Percent of Budget
Clinical Research	78%	1st
Behavioral and Social Sciences Research	60%	2nd
Prevention	43%	3rd
Health Disparities	34%	2nd
Social Determinants of Health	26%	3rd
Training**	22%	2nd
Women's Health	20%	4th

* Funding categories are not mutually exclusive

** National Research Service Awards (Fs/Ts)

Stewardship



ABOUT NINR

Who We Are

What We Do

Strategic Plan

Connect With Us

Visitor Information

Jobs at NINR

The National Institute of Nursing Research 2022–2026 Strategic Plan

PRINT SHARE

Introduction

Director’s Overview

Scientific Strategy

Stewardship

Development Process

FAQs

The National Institute of Nursing Research 2022–2026 Strategic Plan outlines the Institute’s vision for supporting science that advances our mission: to lead nursing research to solve pressing health challenges and inform practice and policy—optimizing health and advancing health equity into the future.

Nurses are crucial to solving the Nation’s most pressing and persistent health challenges. As both the largest health profession and the largest of all professions in the Nation, nurses are the backbone of our health systems in the United States and have ranked as the most trusted profession for 20 years in a row. Nurses interact with individuals and families more closely than other health professionals in the many clinical, community, and policy settings in which they work; thus, they have a deep understanding of the

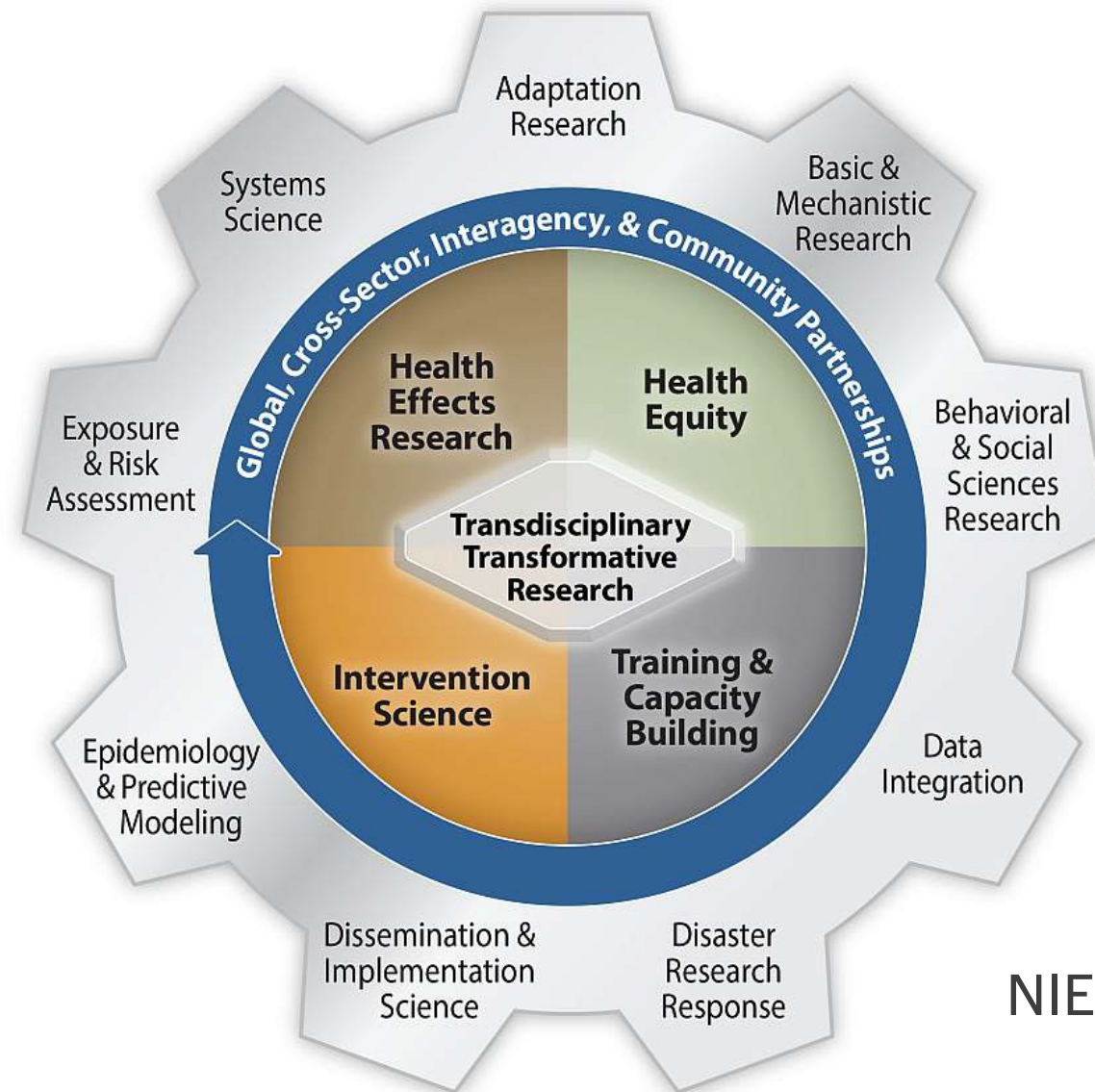


PARTNERSHIP AND COLLABORATION



National Institute
of Nursing Research

NIH Climate Change and Health Initiative



Executive Committee:
NIEHS, FIC, NHLBI, NICHD,
NIMH, NIMHD, NINR

NIH-Wide Social Determinants of Health Research Coordinating Committee



Facilitate

Facilitate sharing of information about SDOH research across NIH and with Federal partners



Develop

Develop SDOH expertise, capacity, and a learning system at NIH



Build

Build community and collaborations in SDOH research across NIH and with Federal partners



Identify

Identify gaps and promising SDOH research directions

Accelerate SDOH research across NIH

across diseases and conditions, populations, life course, SDOH domains

Community Partnerships to Advance Science for Society (ComPASS)



Lead ICOs: **NINR**, NIMH, NIMHD, ORWH, THRO

Transformative Health Disparities Research Program

- **RFA-RM-21-021:** Transformative Research to Address Health Disparities and Advance Health Equity (U01 Clinical Trial Allowed)
- **RFA-RM-21-022:** Transformative Research to Address Health Disparities and Advance Health Equity at Minority Serving Institutions (U01 Clinical Trial Allowed)



Transformative
Research to
Address Health
Disparities
and Advance
Health Equity

Co-Chairs: **NINR**, NIMH, NIMHD, ORWH, THRO

commonfund.nih.gov/healthdisparitiestransformation

Other Initiatives

- HHS Social Determinants of Health Workgroup
- HHS Initiative to Strengthen Primary Health Care
- Interdepartmental Health Equity Collaborative
- Social Determinants of Health Interagency Policy Committee
- Interagency Working Group for the National Healthcare Quality and Disparities Report
- Climate Change, Food Systems, and Nutrition Security





NINR



NHGRI



Collaboration Opportunities



Save the Date

National Advisory Council for Nursing Research

May 24, 11:00 AM (ET)

NINR.NIH.gov



Thank You!

Questions?

Email us: info@ninr.nih.gov